

# **South Carolina Electric Vehicle Charging Infrastructure Deployment Plan**

## **In Support of the National Electric Vehicle Infrastructure Formula Program**

### **(SC NEVI Plan)**

**August 1, 2022**



**South Carolina Department of Transportation**

# Table of Contents

|  |    |
|--|----|
| <b>Introduction</b> .....  | 4  |
| Dates of State Plan for Electric Vehicle Infrastructure Deployment Development and Adoption..... | 4  |
| <b>State Agency Coordination</b> .....   | 5  |
| <b>Public Engagement - Stakeholders</b> .....  | 6  |
| Public Outreach.....   | 8  |
| <b>Plan Vision and Goals</b> .....   | 9  |
| <b>Contracting</b> .....   | 10 |
| Buy America .....  | 10 |
| <b>Existing and Future Conditions Analysis</b> .....   | 11 |
| Electric Utility Providers.....  | 14 |
| State Geography, Terrain, Climate and Land Use Patterns .....                                    | 16 |
| Geography.....   | 16 |
| Terrain.....   | 16 |
| Climate .....  | 16 |
| Resilience .....   | 17 |
| Land Use Patterns .....  | 17 |
| State Travel Patterns, Public Transportation Needs, Freight and Other Supply Chain Needs .....   | 18 |
| AFC - Corridor Networks .....  | 19 |
| Existing Locations of Charging Infrastructure Along AFCs .....                                   | 20 |
| Known Risks and Challenges .....   | 21 |
| <b>EV Charging Infrastructure Deployment</b> .....   | 22 |
| Funding Sources.....   | 22 |
| 2022 Infrastructure Deployments/Upgrades .....   | 22 |
| State, Regional, and Local Policy.....   | 23 |
| <b>Implementation</b> .....  | 24 |
| Strategies for EV Charging Infrastructure Operations & Maintenance .....                         | 24 |
| Strategies for Identifying Electric Vehicle Charger Service Providers and Station Owners.....    | 24 |
| Strategies for EV Charging Equipment Data Collection & Sharing .....                             | 24 |
| Strategies to Address Resilience, Emergency Evacuation, Snow Removal/Seasonal Needs.....         | 24 |
| Strategies to Promote Strong Labor, Safety, Training, and Installation Standards .....           | 24 |
| <b>Civil Rights</b> .....  | 25 |

|  |    |
|--|----|
| <b>Equity Considerations</b> .....   | 25 |
| Identification and Outreach to Disadvantaged Communities (DACs) in the State ..... | 26 |
| Process to Identify, Quantify, and Measure Benefits to DACs .....                  | 26 |
| Benefits to DACs through this Plan .....   | 26 |
| <b>Labor and Workforce Considerations</b> .....                                    | 27 |
| <b>Cybersecurity</b> .....   | 27 |
| <b>Program Evaluation</b> .....  | 27 |
| <b>Discretionary Exceptions (if any)</b> .....                                     | 27 |
| <b>Appendix A</b> .....  | 28 |
| <b>Appendix B</b> .....  | 58 |

## **Introduction**

The South Carolina Department of Transportation (SCDOT) is responsible for adoption and implementation of the National Electric Vehicle Infrastructure (NEVI) Formula Program. This plan was created in consultation with the Energy Office of the South Carolina Office of Regulatory Staff (Energy Office) and the South Carolina Division of the Federal Highway Administration (FHWA-SC).

It is important to acknowledge that this initial plan was established with limited input from stakeholders due to the federally-required timeframe for completion. A consultant will be procured to assist with revisions to this plan. A broad stakeholder engagement initiative will be initiated upon procurement of a consultant. The information obtained during stakeholder engagement will be used to revise this plan on an annual basis; therefore, the information in this plan is subject to revision as forthcoming stakeholder engagement occurs.

South Carolina’s plan will prioritize placement of passenger car electric vehicle (EV) charging equipment along the interstate highway system to complement completion of the national network. Initial emphasis will be placed on rural sections of interstate where the lack of urban facilities make it less feasible for investments from the private sector. Public outreach and stakeholder engagement will occur to identify fair, equitable, and contextually appropriate locations for the equipment.

### **Dates of State Plan for Electric Vehicle Infrastructure Deployment Development and Adoption**

Initial development of this plan began in early 2022. The following preliminary milestone dates will be adjusted as needed during the annual updates to the plan.

| <b>Milestone</b>   | <b>Date</b>     |
|--|-----------------|
| Implementation of Interagency Working Group                              | Pending         |
| Submittal of Initial Plan to the Joint Office                            | August 1, 2022  |
| Initiate Process to Advertise for Consultant to Assist with Plan Updates | October 3, 2022 |
| Procurement of Consultant to Assist with Plan Updates                    | Early 2023      |
| Implementation of Public Engagement                                      | Mid/Late 2023   |
| Annual Update to the Plan  | August 1, 2023  |
| Anticipated Completion of Public Engagement                              | Mid 2024        |
| Annual Update to the Plan  | August 1, 2024  |
| Implementation of Deployment/Upgrades                                    | Late 2024       |
| Annual Update to the Plan  | August 1, 2025  |

## **State Agency Coordination**

The South Carolina Department of Transportation (SCDOT) was established as the lead agency to oversee the implementation of the NEVI Formula Program. Consultation with the Energy Office was established due to their role as the principal energy planning entity for South Carolina. SCDOT and the Energy Office maintained regular communication throughout the development of this plan.

An Interagency Working Group is being created in coordination with South Carolina Governor Henry McMaster to support stakeholder input for this initiative. The Interagency Working Group will include representatives from the following agencies/utilities:

- Office of the South Carolina Governor;
- South Carolina Department of Commerce;
- South Carolina Department of Transportation;
- South Carolina Department of Health and Environmental Control;
- South Carolina Office of Regulatory Staff;
- South Carolina State Fiscal Accountability Authority; and
- State and Investor owned utility companies, electric cooperatives, and public power utilities.

## **Public Engagement - Stakeholders**

SCDOT will identify stakeholders to be involved in the development of the NEVI plan by building upon previous stakeholder efforts in the state. One such effort is the South Carolina Electric Vehicle Stakeholder Initiative conducted by the Energy Office. The South Carolina Electric Vehicle Stakeholder Initiative (EV Stakeholder Initiative) launched in November of 2020 and was conducted throughout 2021, involving over 300 stakeholders. The Energy Office contracted the services of the Duke University Nicholas Institute for Environmental Policy Solutions to support the planning and facilitation of the stakeholder process. An Advisory Committee was formed and met regularly to provide guidance to the Energy Office. The purpose of the EV Stakeholder Initiative was to facilitate a collaborative statewide discussion to explore the opportunities to advance EV deployment in South Carolina, with the goal of developing a list of policy and programmatic recommendations to further EV deployment. The findings of this initiative are currently in draft form and are expected to be released in fall of 2022. Information obtained through the EV Stakeholder Initiative will be incorporated into the annual update of this plan.

Signed by South Carolina Governor Henry McMaster in May 2021, Act 46 (available online at [https://www.scstatehouse.gov/sess124\\_2021-2022/bills/304.htm](https://www.scstatehouse.gov/sess124_2021-2022/bills/304.htm)) references the EV Stakeholder Initiative, and provides for the creation of a Joint Legislative Committee on the Electrification of Transportation (Joint Committee), whose purpose is to “study the challenges and opportunities associated with the electrification of the transportation sector and make recommendations to the General Assembly to enable a fair, efficient, and cost-effective transition to electric transportation.”. The Joint Committee’s recommendations are to be informed by reports received from the SC Office of Regulatory Staff (ORS), the SC Public Service Commission (PSC), and the SC Department of Revenue (DOR). The PSC is required to open a docket, no earlier than April 1, 2023, for the purpose of identifying the regulatory challenges and opportunities associated with the electrification of the transportation sector through the study of listed issues. While the Act does not set a deadline for the PSC’s initial report to the Joint Committee, the PSC is required to open a docket to study these issues every three years after submitting the initial report. Finally, Act 46 requires the DOR, by September first of each year, to provide the Joint Committee an annual report that “details the prior fiscal year’s revenue collections, from whatever source derived, designated for the repair, maintenance, or improvements of the South Carolina transportation system.”. The findings of this initiative will also be evaluated for incorporation into annual updates of this plan.

Palmetto Clean Fuels Coalition (PCF) is a US Department of Energy (US DOE) recognized Clean Fuels coalition and an initiative of the Energy Office. PCF is a grassroots, locally based, voluntary public/private partnership with the goal of promoting energy use in the transportation sector that is clean, safe, less dependent upon foreign sources, and sustainable. It is part of a network of more than 75 active Clean Cities Coalitions throughout the country to help local decision makers and fleets, enabling local coalitions to leverage the resources of the US DOE Vehicle Technologies Office and the National Labs. PCF works with a wide spectrum of stakeholders, fleet managers, fuel providers, vehicle and technology providers, governmental entities, community leaders, and others. SCDOT will coordinate with PCF’s network of stakeholders to obtain feedback for annual updates to this plan.

PCF works with a broad spectrum of stakeholders to assist with alternative fuel infrastructure planning, general outreach and awareness, technical assistance and fleet coaching, and technical training and education. Notable examples of PCF projects include work on the Alternative Fuel Corridor nomination process, fleet assessments and technical support to municipalities and other fleets considering transitioning to alternative fuels, producing informational materials on EVs, and collaborating on EV bus

maintenance training. Of particular note is the Plug in SC Incentive Program. In September 2020, PCF launched the Plug in SC program to support the adoption of standardized EV charging station signage and branding throughout the state. Through this program, qualifying participants receive EV signage free of charge, so that their charging stations are easily identifiable and provide a uniform user experience across the state. The program continues to garner success, with a total of 87 signs having been installed at various EV charging stations across the state to date. All of South Carolina's publicly accessible EV charging stations are eligible to participate in the program.

In addition, the following Clean Cities projects will be utilized as guidance to assist with annual updates to this plan:

- Carolina Alternative Fuel Infrastructure for Storm Resilience (see discussion on "Resilience" in the section of this plan titled, "State Geography, Terrain, Climate and Land Use Patterns"): [https://cleancities.energy.gov/partnerships/search?project\\_search=2019+Advanced+Vehicle+Technologies+Research#carolina-resilience](https://cleancities.energy.gov/partnerships/search?project_search=2019+Advanced+Vehicle+Technologies+Research#carolina-resilience)
- Southeast Alternative Fuel Deployment Partnership [https://cleancities.energy.gov/partnerships/search?project\\_search=2017+Community-Based+Advanced+Transportation+Projects#CTE](https://cleancities.energy.gov/partnerships/search?project_search=2017+Community-Based+Advanced+Transportation+Projects#CTE)
- Southeast Regional Readiness [https://cleancities.energy.gov/partnerships/search?project\\_search=Electric+Vehicle+Community+Readiness#EVCR-southeast](https://cleancities.energy.gov/partnerships/search?project_search=Electric+Vehicle+Community+Readiness#EVCR-southeast)

The following preliminary list of stakeholders will be included in addition to other members identified by the Interagency Working Group. This list will be routinely updated to include additional organizations as the plan evolves.

- Metropolitan Planning Organizations and Regional Transportation Planning Organizations;
- Counties and cities, including coordination with existing EV charging programs;
- SC Public Service Commission;
- SC Department of Employment and Workforce;
- Regional and local public transit agencies;
- State logistics industry partnerships;
- State economic development entities;
- Responsible emergency/disaster preparedness functions in the State;
- Federally Recognized Tribes;
- Electric utilities and transmission and distribution owners;
- Port and freight authorities;
- Community-based organizations, small business associations, Chambers of Commerce;
- Private sector EV charging station owners and network operators;
- Investors in EV charging infrastructure;
- Minority and women-based organizations;
- Environmental justice, equity, and other community organizations with an interest in EV charging;
- EV industry organizations and EV advocacy groups;
- Automotive manufacturing;
- Tire manufacturing; and
- Gas station owners and operators.

Another relevant stakeholder initiative is the South Carolina Electric Transportation Network organized by the Conservation Voters of South Carolina, which is intended for networking, collaboration, technical assistance, and updates. Coordination with this group has been initiated and will continue as stakeholder initiatives move forward.

The Interagency Working Group will also serve as a resource for identifying the appropriate stakeholders to engage as part of this initiative.

### Public Outreach

South Carolina will utilize public engagement to ensure that decisions are made in consideration of and for the benefit of public needs and preferences. Public outreach will occur through a combination of in-person meetings, online meetings, online surveys, and workshops.

SCDOT will utilize the consultant to assist with creation and implementation of the public engagement initiative. The public engagement efforts will include the use of online engagement. SCDOT has successfully utilized online engagement for extensive and diverse public engagement for a number of planning initiatives recently, including the current update to the South Carolina Multimodal Transportation Plan.



## **Plan Vision and Goals**

This plan provides a multi-year approach to support a convenient, affordable, reliable, and equitable statewide and national EV network that is compliant with the NEVI Formula Program standards and requirements, which are currently in draft form as part of the Notice of Proposed Rulemaking process.

South Carolina's vision is to prioritize placement of NEVI compliant passenger car EV charging equipment along the interstate highway system to compliment completion of the national network. Initial emphasis will be placed on rural sections of interstate where the lack of urban facilities make it less feasible for investments from the private sector.

The goals are as follows:

- Update this plan annually by August 1 for each year of the NEVI Formula Program;
- Conduct a robust stakeholder engagement initiative to guide annual updates to this plan;
- Implement EV charging infrastructure only upon completion and evaluation of stakeholder input;
- Work closely with electricity providers to ensure selected EV charging sites can be provided with electricity in a cost-effective and reasonable manner;
- Provide a minimum of four (4) – 150kW Direct Current Fast Chargers (DCFCs) per site that can simultaneously charge four (4) EVs with 150kW available per EV;
- Ensure EV charging infrastructure sites are located at a maximum spacing of 50 miles along the interstate system and a maximum of one (1) travel mile from the interstate; and
- Ensure the sites comply with the pending NEVI Formula Program standards and requirements.

Annual updates to this plan may modify the vision and goals based upon stakeholder input.

## **Contracting**

South Carolina will utilize a competitive advertisement for consultant services to procure expertise to revise this plan on an annual basis. Revisions to this plan will include criteria for designing, maintaining, constructing, monitoring, and operating EV charging equipment. Annual updates to this plan will incorporate feedback from all stakeholders.

A competitive advertisement will be pursued when the plan is ready for implementation. The contracting method is yet to be determined; however, the initial assumption will be to establish a contract for design, construction, maintenance, and operations of EV charging equipment. The contract will include the following requirements:

- Design and construct the sites in accordance with NEVI Formula Program requirements;
- Goals for disadvantaged business enterprises;
- Maintain and operate the EV charging sites; and
- Report on metrics as required by the NEVI Formula Program standards and requirements, including additional metrics as deemed appropriate to ensure effective implementation.

## **Buy America**

The program will achieve compliance with Buy America as specified in the April 18, 2022 memorandum from the Office of Management and Budget, available online at <https://www.whitehouse.gov/wp-content/uploads/2022/04/M-22-11.pdf>. Close coordination will occur with FHWA-SC to determine if flexibility is allowed if a determination is made that domestic availability of EV charging equipment is delaying the implementation of the NEVI Formula Program.

The stakeholder initiative will serve as a resource to ensure the latest developments in domestic EV charging equipment are being considered. In addition, SCDOT has established monthly coordination calls with our neighboring states (Georgia and North Carolina) to ensure NEVI plans are well coordinated. These monthly coordination calls facilitate a discussion forum for domestic availability of EV charging equipment. SCDOT has also joined the EV Practitioners Working Group of the American Association of State Highway and Transportation Officials (AASHTO) to ensure engagement on a national level with developments for EV charging infrastructure.

## Existing and Future Conditions Analysis

South Carolina registration of EVs, to include battery electric vehicles (BEVs) and plug-in hybrid electric vehicles (PHEVs), are depicted in Figure 1. BEVs are defined as battery powered electric vehicles that operate without an internal combustion engine. PHEVs are defined as vehicles that have both an internal combustion engine and a battery powered electric motor.

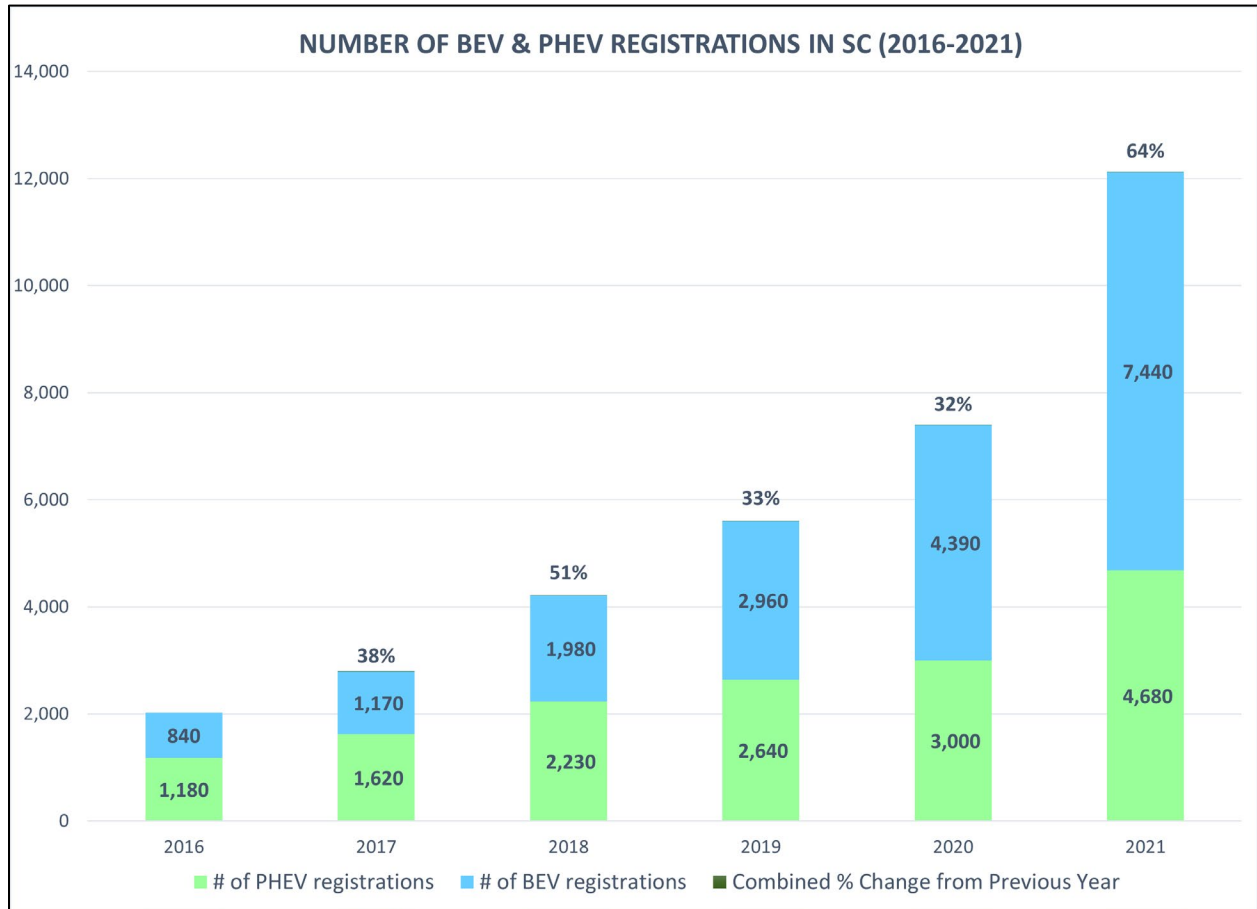


Figure 1 – Number of BEV and PHEV Registrations in South Carolina

Derived Registration Counts by the National Renewable Energy Laboratory, Experian Information Solutions

Figure 2 depicts EV registrations and Charging Stations located in South Carolina during 2016. For comparison purposes, Figure 3 depicts the same data for 2020.

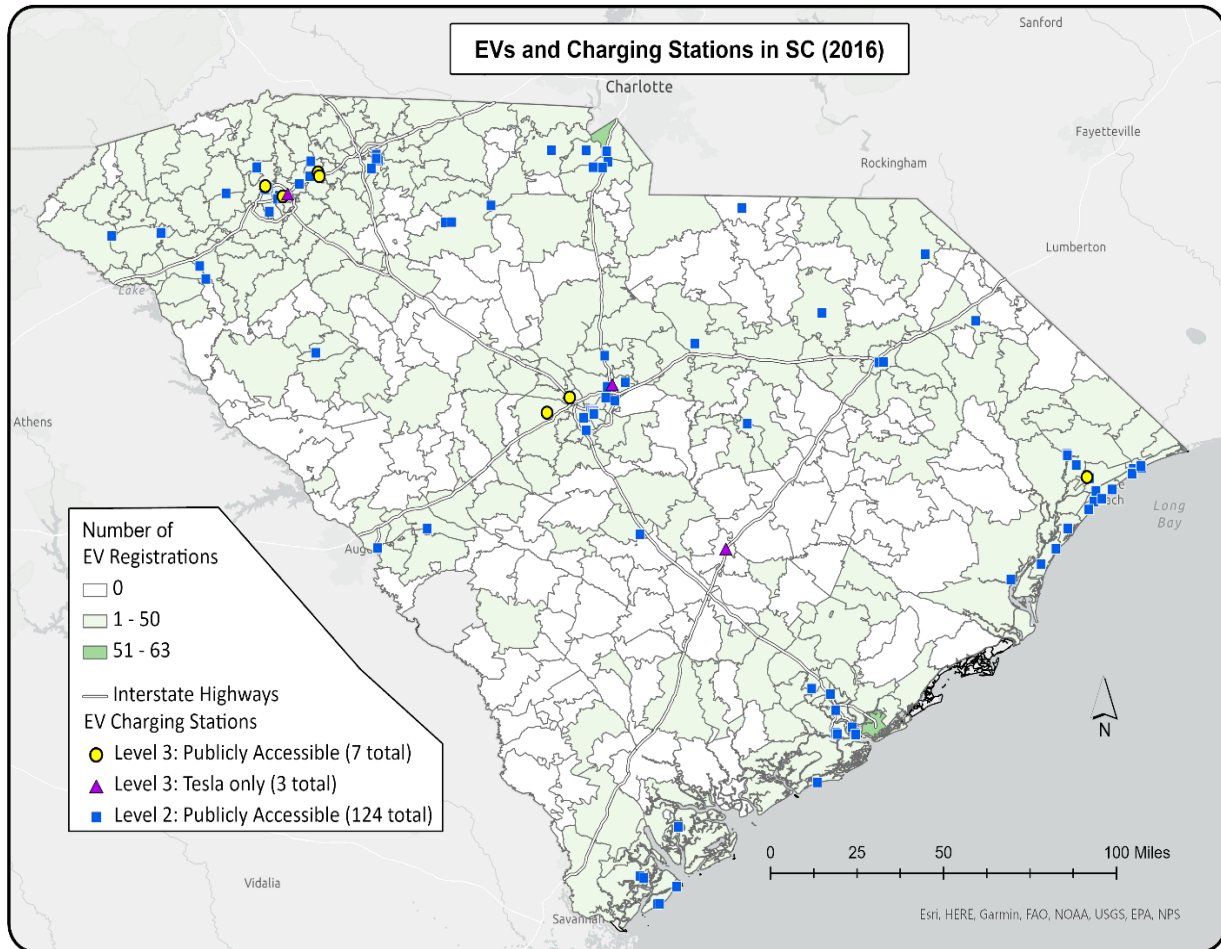


Figure 2 – South Carolina EV Registrations and Charging Stations in 2016

Information obtained from the National Renewable Energy Laboratory, Experian Information Solutions and the United States Department of Energy Alternative Fuels Data Center.

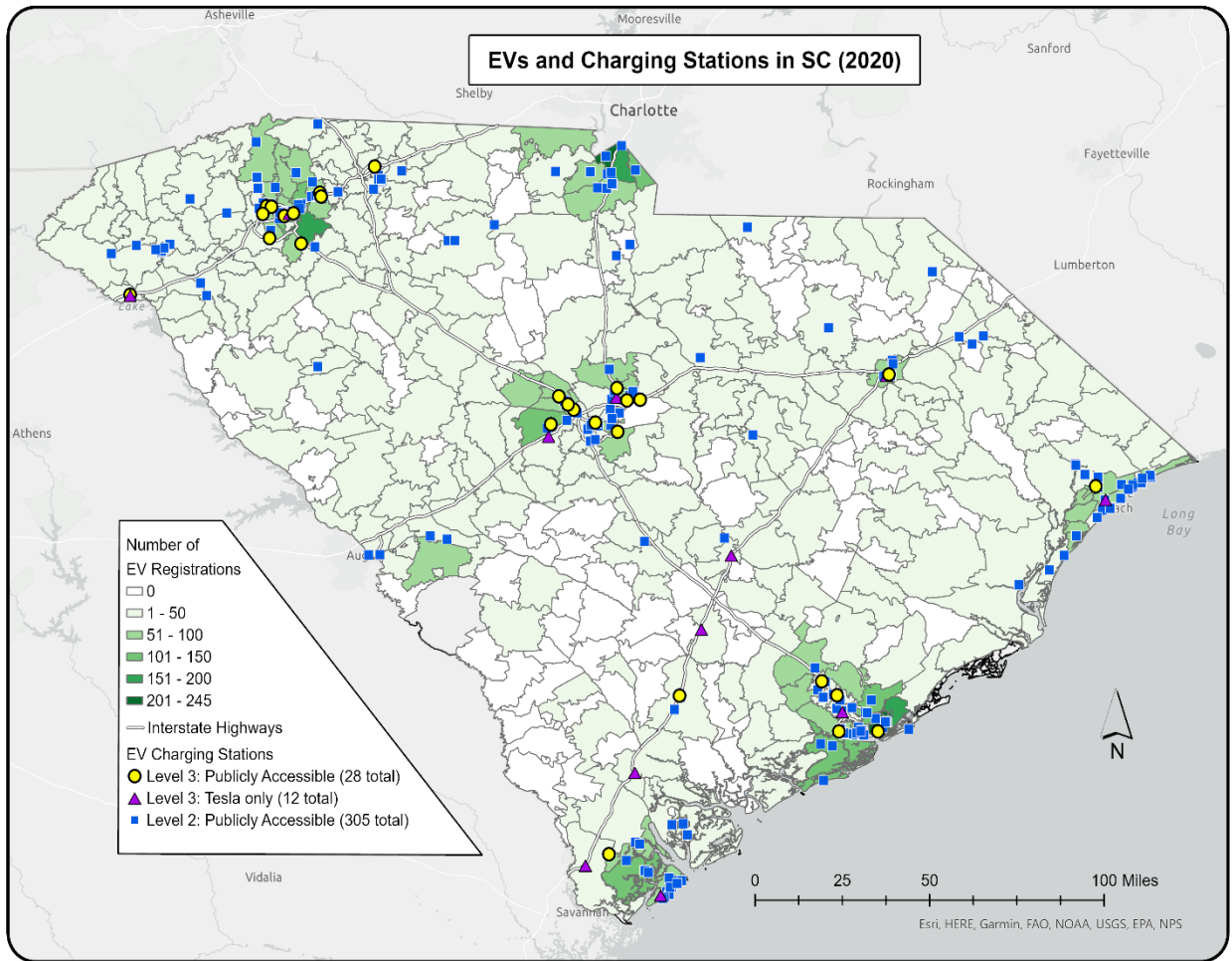


Figure 3 – South Carolina EV Registrations and Charging Stations in 2020

Information obtained from the National Renewable Energy Laboratory, Experian Information Solutions and the United States Department of Energy Alternative Fuels Data Center.

## Electric Utility Providers

Electric utility providers in South Carolina are comprised of the following service providers:

### State-Owned Utility

- Santee Cooper

### Investor-Owned Utilities

- Dominion Energy South Carolina
- Duke Energy Carolinas
- Duke Energy Progress
- Lockhart Power Company

### Electric Cooperatives

- Twenty-three (23) electric cooperatives located throughout the state

### Municipal Utilities

- Twenty (21) municipal utilities located throughout the state

Electric utility providers in South Carolina have displayed interest in supporting EV charging by way of the sharing information with the public as shown at websites below:

### Santee Cooper

<https://www.santeecooper.com/news/2022/012422-Santee-Cooper-approves-500000-grant-program.aspx>

### Dominion Energy

<https://www.dominionenergy.com/south-carolina/save-energy/electric-vehicles>

### Duke Energy

<https://www.duke-energy.com/energy-education/electric-vehicles>

### Electric Cooperatives

<https://energysmartsc.org/electric-vehicles/>

### Municipal Utilities

<https://www.masc.sc/Pages/newsroom/uptown/May%202022/Cities-Drive-Charge-for-Vehicle-Electrification.aspx>

A map of the electric utility service areas can be found online at <https://energy.sc.gov/node/3071>.

The demand for electricity depends on numerous variables, one of which is weather, with peaks resulting from air conditioning use in the summer and heating use in the winter. Most of South Carolina's utilities tend to reach their peak demand in the summer, although recently they have experienced peaks in both summer and winter. Utilities need sufficient capacity to meet this demand, which is defined as the maximum electric output a generator can produce under specific conditions and is measured in megawatts (MWs).

South Carolina has two multi-state utilities (Duke Energy Carolinas and Duke Energy Progress) that share the electricity generated in both South Carolina and North Carolina among their customers in the Carolinas. The pro rata share data in Figure 4 represents the portion of electricity generation capacity allocated in South Carolina.

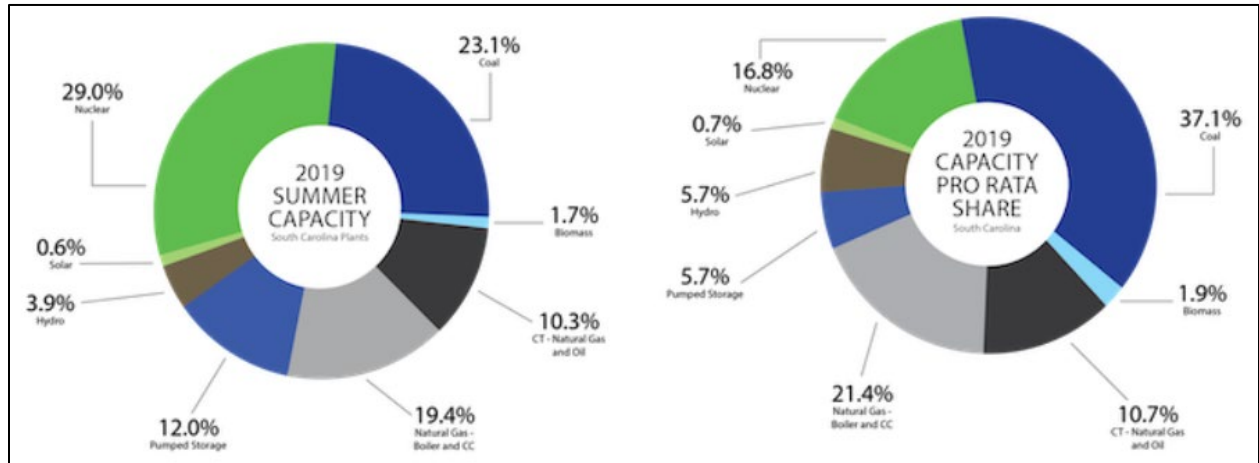


Figure 4 – South Carolina Electricity Grid Capacity and Pro Rata Share in 2019

Electricity generated in South Carolina is not necessarily consumed in the state. As previously discussed, South Carolina has two multi-state utilities (Duke Energy Carolinas and Duke Energy Progress) that share the electricity generated in both South Carolina and North Carolina among their customers in the Carolinas. Therefore, the generation fuel mix does not solely represent the consumption by South Carolina customers, due to electric resources being shared across both states. The pro rata share data in Figure 5 represents the portion of electricity consumed in South Carolina.

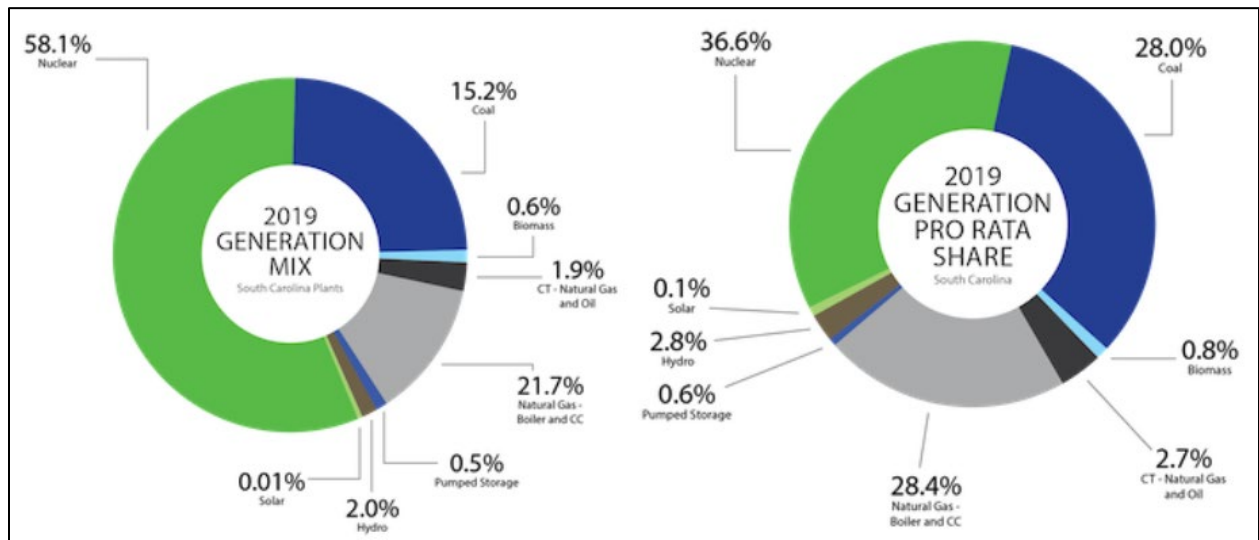


Figure 5 – South Carolina Electricity Generation and Pro Rata Share in 2019

## State Geography, Terrain, Climate and Land Use Patterns

South Carolina's geography, terrain, climate, and land use patterns will influence the load profiles for EV charging equipment and will also play a role in how EV owners will charge and drive. Consideration will be provided for these variables as further development of specific locations for EV charging equipment are identified. The following information provides an overview of South Carolina specific characteristics.

### Geography

The state can be divided into three natural geographic areas which then can be subdivided into five distinct cultural regions. The natural environment is divided from east to west by the Atlantic coastal plain, the Piedmont, and the Blue Ridge Mountains. Culturally, the coastal plain is split into the Lowcountry and the Pee Dee region. The upper Piedmont region is referred to as the Piedmont and the lower Piedmont region is referred to as the Midlands. The area surrounding the Blue Ridge Mountains is known as the Upstate.

### Terrain

The state's terrain can be divided into three areas. The Atlantic coastal plain, the Piedmont, and the Blue Ridge Mountains. The Atlantic coastal plain is relatively flat. The Piedmont is also relatively flat in the southern portion with rolling hills near the center of the state and high hills to the northern portion of the Piedmont. The Blue Ridge Mountains have low soft hills in the southern portion and majestic mountains in the northern portion.

### Climate

The following information was obtained from the website of the South Carolina State Climatology Office (<https://www.dnr.sc.gov/climate/sco/index.php>). South Carolina has primarily a humid subtropical climate, with hot humid summers and mild winters. There is no wet or dry season; only relatively heavy precipitation periods or light precipitation periods. No month averages less than two inches of precipitation anywhere in South Carolina. In northwestern South Carolina, winter precipitation is greater than summer; the reverse is true for the remainder of the state. During summer and early fall of most years, the state is affected by one or more tropical storms or hurricanes.

Severe weather occurs in South Carolina occasionally in the form of violent thunderstorms and tornadoes. Although less frequent than surrounding states, thunderstorms are common in the summer months. The more violent storms generally accompany squall lines and active cold fronts of late-winter or spring. Strong thunderstorms usually bring high winds, hail, considerable lightning, and rarely spawn a tornado.

Tropical cyclones affect the South Carolina coast on an infrequent basis, but do provide significant influence annually through enhanced rainfall inland during the summer and fall months. Depending on the storm's intensity and proximity to the coast, tropical systems can be disastrous. The major coastal impacts from tropical cyclones are storm surge, winds, precipitation, and tornadoes. Hurricanes are the most intense warm season coastal storms and routinely threaten South Carolina during the Atlantic Hurricane Season, which runs from June 1 through November 30 of each year.

Flooding occurs on several streams in the state each year. A certain amount of control can be effected on the large rivers which have dams. The state can experience riverine flooding any month of the year. However, it is most likely to occur in association with tropical cyclones, because of their typically slow forward motion and abundant moisture.



## Resilience

A project is underway by E4 Carolinas titled, “Carolina Alternative Fuel Infrastructure for Storm Resilience Plan”. This project engages appropriate Carolina alternative fuel vehicle stakeholders. They will undertake planning, training, and implementation to create an integrated Carolina plan to employ alternative fuel vehicles in enhancing resilience during, and recovery from, infrastructure disruption. The plan will establish emergency procedures, training, and best practices for the diversification of, and access to, alternative fuels to expedite storm recovery, increase disruption resilience and ensure that alternative fuel supplies are reliable during times when conventional fuel supplies are susceptible to disruption. This project will produce a plan augmenting the content of both North Carolina’s and South Carolina’s emergency preparedness plans by clearly identifying 1) alternative fuel vehicle (AFV) fleets which can be employed in storm, disaster, or petroleum fuel disruption recovery, 2) alternative fuel resources for such fleets, 3) means by which alternate fuel vehicles can better serve in recovery actions, and 4) communication of information regarding fleets and alternate fuel systems to facilitate increased utilization. The final report for this project will be issued on or before November 1, 2022. The findings of this report will be reviewed to determine if they are appropriate for South Carolina’s implementation of the NEVI Formula Program.

## Land Use Patterns

The stakeholder engagement process will ensure coordination occurs with the local/regional planning authorities. This coordination will allow us to understand existing and future development characteristics of land with the goal of using the information to assist with strategic placement of EV charging equipment.

State Travel Patterns, Public Transportation Needs, Freight and Other Supply Chain Needs

Population in South Carolina has continued to increase, with the state ranked as the 10<sup>th</sup> fastest growing in the country following the 2020 Census. Between the decennial Census of 2010 and 2020, the population in South Carolina grew by 10.7% to 5.1 million citizens, an increase of 493,041 people. By 2040, the population is expected to surpass 6.3 million.

Between 2010 and 2020, South Carolina saw a shift in population from the state’s rural to urban areas, with significant growth following the I-26, I-85 and I-77 corridors. Reference Figure 6 for a map depicting this shift in population.

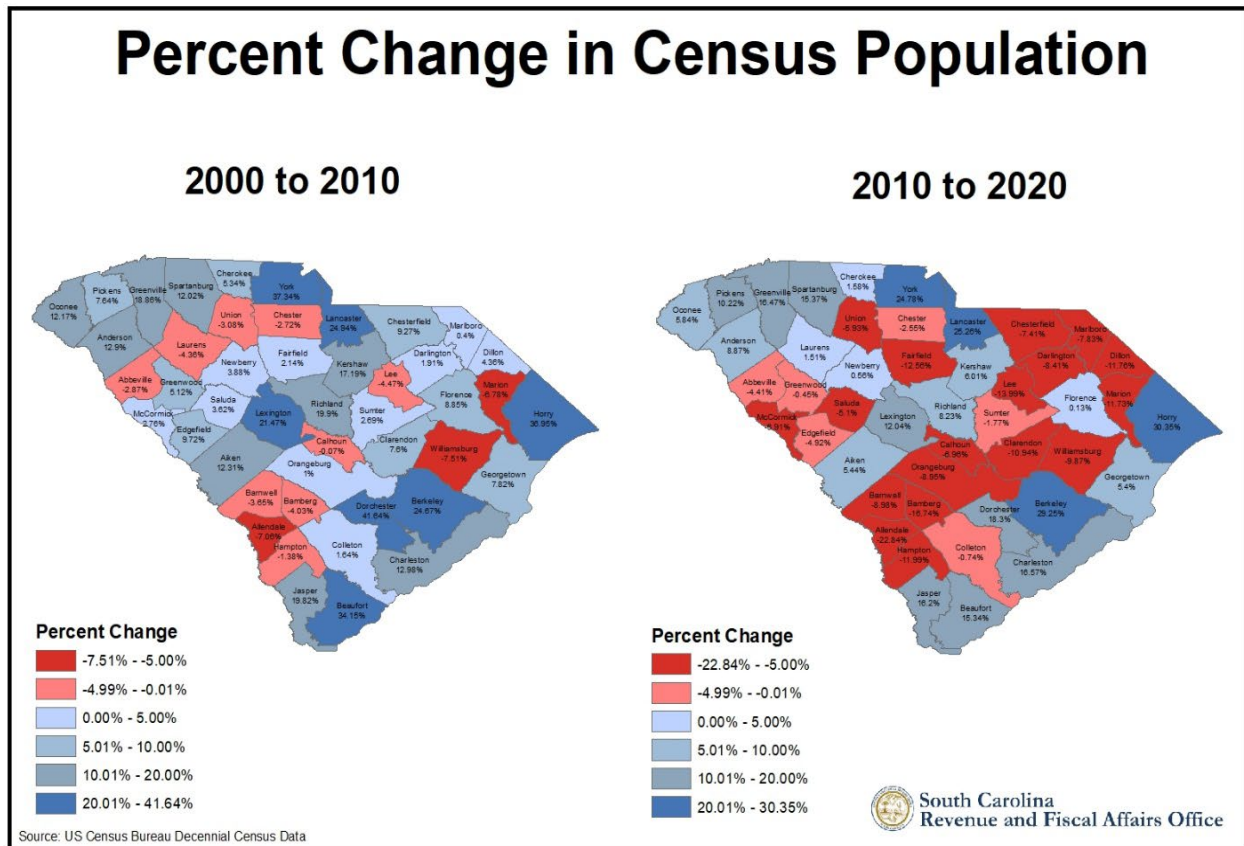


Figure 6 – South Carolina Percent Change in Census Population

Over 30 million visitors come to South Carolina each year to enjoy our rich history, charming cities, beautiful beaches, and mountains. South Carolina is home to industry giants, such as BMW in the Upstate region as well as Boeing, Mercedes Benz, and Volvo in the Charleston region. South Carolina is also considered the “Tire Capital of the World” with Bridgestone, Continental, and Michelin manufacturing plants around the state.

The South Carolina Ports Authority (SCPA) relies on an effective highway and rail system to move goods throughout South Carolina as well as throughout the southeastern United States. SCPA operates the state’s vital seaport assets in Charleston. This is a \$53 billion-a-year economic engine generating 1 of every 11 jobs within the state. In October 2013, the first inland port opened in South Carolina allowing

the Port of Charleston to reach 212 miles inland to Greer and in 2018, the second inland port opened in Dillon, South Carolina. The addition of these two South Carolina inland ports provides shippers’ access to more than 95 million consumers within a day’s drive.

Twenty-eight public transit systems operate in 42 of South Carolina’s 46 counties. Given the close proximity to Clemson University’s International Center for Automotive Research (CU-ICAR), Proterra, a manufacturer of electric transit buses and electric charging systems, located a manufacturing facility in Greenville. With the advantage of having an industry leader within the state, a number of transit systems, including those in Charleston, Greenville, Clemson, and Rock Hill (just south of Charlotte), have introduced electric buses and charging infrastructure to their fleets.

**AFC - Corridor Networks**

The below chart specifies the Alternative Fuel Corridor (AFC) designations that have been identified by South Carolina as part of rounds 1 through 6 of the AFC designation process.

| <b>Route</b> | <b>Status - Date</b> | <b>Amount of Corridor</b>   |
|--------------|----------------------|---|
| I-85         | Ready as of 2022     | Entire Length of Corridor   |
| I-77         | Ready as of 2022     | Entire Length of Corridor   |
| I-26         | Ready as of 2022     | From Irmo to Orangeburg and from Ladson to Charleston             |
| I-26         | Pending as of 2022   | From SC/NC border to Irmo and from Orangeburg to North Charleston |
| I-95         | Pending as of 2022   | Entire Length of Corridor   |
| I-20         | Pending as of 2022   | Entire Length of Corridor   |

All of the aforementioned AFCs will require evaluation of existing EV charging infrastructure to ensure compliance with the NEVI Formula Program standards and requirements. Figure 8, Figure 10, and Appendix B specify the current EV charging sites along AFCs that are potentially NEVI compliant as-is. Annual updates to this plan will include evaluations of existing EV charging sites along AFCs to determine if they can be utilized as-is or upgraded to meet the requirements of the NEVI Formula Program.

## Existing Locations of Charging Infrastructure Along AFCs

The following figures depict public accessible EV chargers in South Carolina. Reference Appendix A for data that was utilized to create Figure 7. Reference Appendix B for data utilized to create Figure 8.

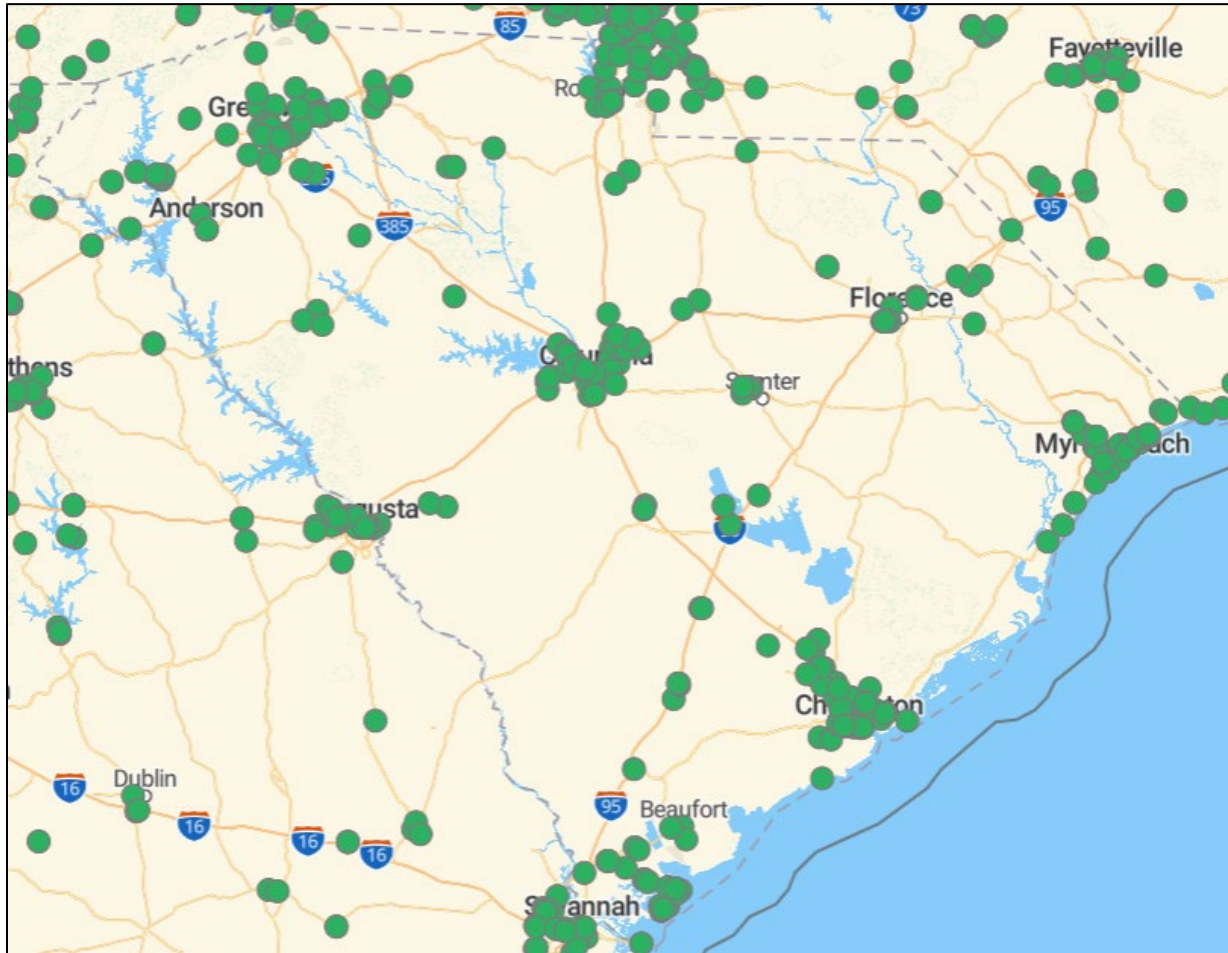


Figure 7 – Existing Public DCFC and Level 2 Chargers in South Carolina  
Information Obtained from <https://afdc.energy.gov>



Figure 8 – Existing Public DCFC Locations on South Carolina AFC Corridors  
 Information Obtained from <https://afdc.energy.gov>

Known Risks and Challenges

In the current market, it is reasonable to consider challenges may arise concerning labor shortages, supply chain issues with construction materials and computer chips, volatile fuel prices, and unstable cost estimation. These issues may impact timeliness and efficiency for the delivery of this initiative.

Upon selection of a consultant, the forthcoming stakeholder engagement initiative will potentially identify other risks for which mitigation strategies will be developed to ensure challenges are overcome.

## **EV Charging Infrastructure Deployment**

South Carolina is aware of the NEVI Formula Program Guidance document (dated February 10, 2022) and also of the Notice of Proposed Rulemaking (NPRM) for Minimum Standards and Requirements for the NEVI Formula Program that was issued for public comment on June 22, 2022. The comment period for the NPRM closes on August 22, 2022. South Carolina will ensure that the deployment of EV charging equipment occurs in compliance with the program guidance and final version of the minimum standards. The deployment is anticipated to focus on rural sections of the interstate system where the lack of urban facilities make it less feasible for private sector investments. Upon selection of a consultant, public outreach and stakeholder engagement will be initiated to serve as the primary resource of information to guide revisions to the vision and goals specified in this plan.

### **Funding Sources**

SCDOT will evaluate the feasibility for obtaining the matching funds from entities that will receive revenue from the EV charging stations. SCDOT will also evaluate the feasibility of providing matching funds from the State Highway Fund or the State General Fund.

### **2022 Infrastructure Deployments/Upgrades**

Figure 9 depicts the results of a preliminary analysis to identify the anticipated maximum number of EV charging sites that will be needed to achieve compliance with the NEVI Formula Program. The number of interchanges are also specified to assist with understanding the feasibility of establishing host sites along these corridors.

| <b>AFC</b> | <b>Amount of Corridor</b>           | <b>Length (miles)</b> | <b>Number of Interchanges</b> | <b>Anticipated Maximum Number of EV Charging Sites to Achieve NEVI Compliance</b> |
|------------|-------------------------------------|-----------------------|-------------------------------|---|
| I-85       | Entire Length of Corridor           | 106                   | 37                            | 2   |
| I-77       | Entire Length of Corridor           | 91                    | 29                            | 2   |
| I-26       | From Irmo to Orangeburg             | 48                    | 17                            | 1   |
| I-26       | From Ladson to Charleston           | 16                    | 9                             | 1   |
| I-26       | From SC/NC border to Irmo           | 101                   | 25                            | 2   |
| I-26       | From Orangeburg to North Charleston | 56                    | 13                            | 1   |
| I-95       | Entire Length of Corridor           | 199                   | 39                            | 4   |
| I-20       | Entire Length of Corridor           | 141.5                 | 34                            | 3   |

Figure 9 - Anticipated Maximum Number of EV Charging Sites to Achieve NEVI Compliance

Figure 10 identifies EV charging sites on AFCs that are potentially NEVI compliant. These sites will be further evaluated to ensure compliance with the current and pending NEVI requirements and if deemed compliant, will be used to supplement the number of new sites needed to achieve compliance with the NEVI Formula Program.

Information in Figure 10 was obtained from the US Department of Energy Alternative Fuels Data Center. All locations have been identified as being within one (1) mile of an AFC designation by FHWA with a minimum of four (4) 150kW DC Fast Chargers with Combined Charging System (CCS) connectors.

| ID     | Alternative Fuel Corridor  | Street Address       | City             | Zip Code | EV Network        |
|--------|----------------------------|----------------------|------------------|----------|-------------------|
| 122985 | I-26                       | 7250 Rivers Ave      | North Charleston | 29406    | Electrify America |
| 133662 | I-85 / I-385 (interchange) | 1211 Woodruff Road   | Greenville       | 29607    | Electrify America |
| 167167 | I-20 / I-95 (interchange)  | 230 N Beltline Drive | Florence         | 29501    | Electrify America |
| 169353 | I-26                       | 360 Harbison Blvd    | Columbia         | 29212    | Electrify America |
| 169461 | I-95                       | 2110 Bells Highway   | Walterboro       | 29488    | Electrify America |

Figure 10 – Potential NEVI Compliant EV Charging Sites

Annual updates to this plan will include evaluations of existing EV charging sites along AFCs to determine if they can be utilized as-is or upgraded to meet the requirements of the NEVI Formula Program.

The consultant will assist with identifying more precise locations for the EV charging infrastructure based upon completion of the stakeholder engagement initiative.

### State, Regional, and Local Policy

The Interagency Working Group and the stakeholder initiative establishes a statewide forum to ensure that state and local policies are implemented to support the completion of the NEVI Formula Program. South Carolina is engaged on a monthly basis with our neighboring states to ensure regional approaches are coordinated.

## **Implementation**

Implementation of the plan will adhere to all applicable requirements specified for the NEVI Formula Program. Additional details are provided in the following sections.

### **Strategies for EV Charging Infrastructure Operations & Maintenance**

Based upon an initial assessment of industry trends, a minimum five (5) year period of support after construction will be established for maintenance and operations of the equipment. This timeline will be reevaluated as part of the annual update to this plan and in conjunction with stakeholder engagement. The costs for maintenance and operations are anticipated to be 5 – 10 percent of the installation costs.

### **Strategies for Identifying Electric Vehicle Charger Service Providers and Station Owners**

The current strategy is to utilize a competitive process to identify the selected service provider(s) to design, construct, operate, and maintain EV charging stations. The selected service provider(s) will also be responsible for generating reporting metrics to measure success of the NEVI Formula Program. This strategy may evolve based on the information received from stakeholder engagement.

We anticipate the selected service provider(s) will obtain the necessary agreements and permits to establish host sites with public or private entities.

### **Strategies for EV Charging Equipment Data Collection & Sharing**

The selected service provider(s) will be contractually obligated to provide data required for compliance with the NEVI Formula Program. South Carolina will ensure open and transparent availability of data.

### **Strategies to Address Resilience, Emergency Evacuation, Snow Removal/Seasonal Needs**

South Carolina climate, as previously discussed in this plan, includes snow/ice, tropical systems, and heavy rains with flooding. The level of climate diversity requires that each EV charging station site have a unique analysis of natural threats to ensure resiliency is established at the host sites.

Further considerations will be provided to determine the feasibility of providing backup power generation for the EV chargers in the event of a natural disaster that interrupts the power grid.

In addition, reference the narrative for the E4 Carolinas project that was provided in the section of this plan titled, “State Geography, Terrain, Climate and Land Use Patterns”.

### **Strategies to Promote Strong Labor, Safety, Training, and Installation Standards**

South Carolina will coordinate with EV charging industry leaders to ensure appropriate certifications for labor are contractually required by the service provider to promote safety, training, and compliant installation/operation of EV chargers.

Reference the section of this plan titled, “Equity Considerations” for additional information on labor/workforce strategies.



## **Civil Rights**

South Carolina will adhere to Title VI of the Civil Rights Act of 1964 regarding discrimination by recipients of federally funded programs, Section 504 for the Rehabilitation Act of 1973, and with the American with Disabilities Act. SCDOT is the lead agency for implementation of the NEVI Formula Program and has extensive experience with achieving compliance with the aforementioned Acts. The SCDOT Office of Minority & Small Business Affairs will provide expertise and assistance on matters related to Civil Rights. The forthcoming stakeholder engagement initiative will connect relevant stakeholders (both public and private) to ensure a well-balanced approach to implementation of the NEVI Formula Program. Contractual controls will be implemented to ensure compliance with the necessary requirements. These controls will apply to everything from EV charger installation, operation and maintenance, to equitable and accessible unit placement and payment methods.

## **Equity Considerations**

With the cost of gasoline significantly increasing in 2022, the extreme fluctuation of gasoline makes travel by electric vehicle a competitive option for consumers. Limited transportation options and high fuel prices disproportionately impact many low-income neighborhoods across our state. Expanding accessibility to electric vehicle charging in low-income and disadvantaged communities is important to provide all income groups with opportunities to access alternative sources of transportation.

Consistent with the Justice40 initiative, SCDOT will consider how disadvantaged communities will benefit from the added job growth resulting from the NEVI Formula Program and will examine the availability of the workforce to meet the proposed requirements. The installation and maintenance of EV charging equipment is required to be performed safely by a skilled workforce that has appropriate licenses, certifications, and training. SCDOT will take proactive steps to work with entities like training providers, workforce boards, labor unions, other worker organizations, community-based organizations, and non-profits to build a local workforce that will support the EV network. This includes encouraging the expansion of registered apprenticeship programs and other programs that prepare workers for employment opportunities in this emerging field.

To ensure payment options are not only secure but also equitable and accessible, SCDOT will evaluate innovations in payment methods. This includes proposed requirements that payment options are ADA compliant and include contactless payment be accepted from all credit and debit cards, and that access and service are not restricted by membership or payment method type. Not requiring that a sole payment method be credit card takes into consideration the needs of the unbanked and underbanked who may need to pay via another payment method, such as a prepaid card developed to be used at EV charging stations or software applications on smart devices.

Given that South Carolina's population centers are largely spread out across the state, moving people to and from these centers via the major interstates is important. Moreover, South Carolina's economy is largely dependent on tourism and manufacturing. With an unemployment rate of 3.4 percent, and the importance of manufacturing and tourism, it is critical that the state be able to effectively move both goods and people. Increasing access to electric vehicle charging along these corridors is essential to increasing opportunities and improving the lives of disadvantaged groups and communities by providing transportation options.

## Identification and Outreach to Disadvantaged Communities (DACs) in the State

South Carolina will utilize the EV Charging Justice40 Map Tool from the United State Department of Energy and United States Department of Transportation to identify DACs in South Carolina. This map tool is available online at <https://www.anl.gov/esia/electric-vehicle-charging-equity-considerations>.

Other tools will also be evaluated as follows:

- FHWA Screening Tool for Equity Analysis of Projects (STEAP), available online at <https://hepgis.fhwa.dot.gov/fhwagis/buffertool/>
- The Council on Environmental Quality Economic (CEQ) Climate Justice Screening Tool, available online at <https://screeningtool.geoplatform.gov/en/#4.29/38.32/-85.06>
- The United States Environmental Protection Agency (US EPA) Environmental Justice Screening and Mapping Tool, available online at <https://ejscreen.epa.gov/mapper/>

## Process to Identify, Quantify, and Measure Benefits to DACs

Annual updates to this plan will identify metrics to quantify and measure in order to evaluate benefits to DACs. Upon selection of a consultant, public outreach will serve to establish metrics that are meaningful to DACs to ensure the appropriate issues are targeted and tracked.

## Benefits to DACs through this Plan

Providing transportation options is an essential principal to benefit DACs. The NEVI Formula Program will provide DACs will a transportation option that will hopefully decrease in expense as availability of EVs and EV chargers becomes more prevalent. Targeted public outreach to DACs will be implemented and used to modify the annual updates to this plan.

Coordination will occur with FHWA-SC and the Joint Office to adapt as additional guidance is provided on this subject.

## **Labor and Workforce Considerations**

The Interagency Working Group is comprised of the appropriate members to initiate discussion of labor and workforce related to EV charging equipment. Subsequent coordination with EV charging industry leaders will occur to ensure a partnered approach to solving challenges related to labor and the workforce.

Options for addressing issues related to this subject are to engage with the South Carolina technical college system. South Carolina's technical college system and its internationally renowned programs - readySC™ and Apprenticeship Carolina™ - provide the training and education necessary to build a competitive and diverse workforce.

As an integral part of the SC Technical College System, readySC™ works together with the state's 16 technical colleges to prepare South Carolina's workforce to meet the needs of the state's industries. Established in 1961, readySC™ is one of the oldest and most experienced workforce training programs in the country, and seeks to assist companies with identifying the skills, knowledge and abilities needed, designing new and innovative training solutions, and developing training and project management programs.

Apprenticeship Carolina™, a division of the SC Technical College System, leads South Carolina in registered apprenticeship programs that help businesses and communities thrive economically. Through innovation and partnerships, Apprenticeship Carolina catalyzes the promotion of registered youth, adult, and pre-apprenticeships. Apprenticeship Carolina is also a resource to help employers create, maintain, and maximize the use of these programs. Apprenticeship Carolina is committed to creating and strengthening career pathways that enrich and enhance South Carolina's existing and future workforce.

## **Cybersecurity**

The consultant selected to assist with the annual updates will provide industry expertise on cybersecurity provisions. Contract specifications for cybersecurity provisions will be required as part of the implementation of EV charging stations. Information from the National Institute of Standards and Technology will be utilized in conjunction with feedback from industry leaders to ensure risk of cyber threat is managed to not impact payment or data analytics at EV charging stations.

## **Program Evaluation**

Procurement of a consultant with expertise in EV charging programs will assist with identifying measurements for acceptable performance. The annual plan update will include a review of reporting data and if needed, revised strategies to mitigate inefficiencies. This annual review will also evaluate emerging technology and industry innovations to determine if the implementation plan needs refinement.

## **Discretionary Exceptions (if any)**

If needed, discretionary exceptions will be reviewed in coordination with FHWA-SC prior to formal consideration. There are no discretionary exceptions identified at this time. Annual updates to this plan may introduce the need to use this tool; however, it will be reserved for unique scenarios that are well justified.

## **Appendix A**

### **Tabular Data for Existing Public DCFC/Level 2 Chargers in South Carolina**

### Existing Public DCFC/Level 2 Chargers in South Carolina

| ID    | Charger Level | Number of Connectors | Street Address        | City        | Zip Code | Location                                       | EV Network    | Date Last Confirmed |
|-------|---------------|----------------------|-----------------------|-------------|----------|--|---------------|---------------------|
| 36709 | 2             | 2                    | 100 Dunbar St         | Spartanburg | 29306    | City of Spartanburg - Municipal Parking Garage | Non-Networked | 10/12/2021          |
| 36710 | 2             | 2                    | 130 E Saint John St   | Spartanburg | 29306    | City of Spartanburg - Municipal Parking Garage | Non-Networked | 10/12/2021          |
| 36711 | 2             | 2                    | 101 Sharpe Ave        | Union       | 29379    | City of Union Town Hall                        | Non-Networked | 6/14/2022           |
| 37056 | 2             | 1                    | 1619 Decker Blvd      | Columbia    | 29206    | Spinx #149                                     | Non-Networked | 12/9/2021           |
| 38298 | 2             | 10                   | 1100 Taylor St        | Columbia    | 29201    | City of Columbia - Cannon Garage               | Non-Networked | 10/12/2021          |
| 38299 | 2             | 2                    | 1100 Washington St    | Columbia    | 29201    | City of Columbia - Washington Street Garage    | Non-Networked | 10/12/2021          |
| 38300 | 2             | 2                    | 1812 Lincoln St       | Columbia    | 29201    | City of Columbia - Arsenal Hill Garage         | Non-Networked | 10/12/2021          |
| 38301 | 2             | 2                    | 820 Washington St     | Columbia    | 29201    | City of Columbia - Lincoln Street Garage       | Non-Networked | 1/10/2022           |
| 38302 | 2             | 2                    | 150 Cleveland Park Dr | Greenville  | 29601    | Greenville Zoo                                 | Non-Networked | 6/14/2022           |
| 38303 | 2             | 4                    | 25 W McBee Ave        | Greenville  | 29601    | City of Greenville - Poinsett Garage           | Non-Networked | 6/14/2022           |
| 38304 | 2             | 2                    | 316 S Spring St       | Greenville  | 29601    | City of Greenville - Spring Street Garage      | Non-Networked | 6/14/2022           |
| 38305 | 2             | 2                    | 320 N Church St       | Greenville  | 29601    | City of Greenville - Church Street Garage      | Non-Networked | 6/14/2022           |
| 38306 | 2             | 2                    | 1007 Park St          | Columbia    | 29201    | City of Columbia - Park Street Garage          | Non-Networked | 1/10/2022           |

|       |         |                       |                      |               |       |  |               |            |
|-------|---------|-----------------------|----------------------|---------------|-------|--|---------------|------------|
| 38307 | 2       | 2                     | 60 Beattie Pl        | Greenville    | 29601 | City of Greenville - Commons Garage                          | Non-Networked | 6/14/2022  |
| 38308 | 2       | 2                     | 65 Beattie Pl        | Greenville    | 29601 | City of Greenville - Liberty Square Garage                   | Non-Networked | 6/14/2022  |
| 38309 | 2, DCFC | Level 2 - 2, DCFC - 1 | 66 Richardson St     | Greenville    | 29601 | City of Greenville - Richardson Garage                       | Non-Networked | 6/14/2022  |
| 38310 | 2       | 2                     | 121 E Black St       | Rock Hill     | 29730 | City of Rock Hill - Municipal Garage                         | Non-Networked | 1/10/2022  |
| 38312 | 2       | 2                     | 725 Rice Ave         | Union         | 29379 | Timken Sports Complex  | Non-Networked | 10/12/2021 |
| 38313 | 2       | 2                     | 420 River St         | Lockhart      | 29364 | Lockhart Power   | Non-Networked | 3/15/2021  |
| 39842 | 2, DCFC | Level 2 - 2, DCFC - 1 | 3670 Fernandina Rd   | Columbia      | 29210 | Dick Smith Nissan  | Non-Networked | 6/9/2020   |
| 39844 | 2, DCFC | Level 2 - 2, DCFC - 1 | 5536 Sunset Blvd     | Lexington     | 29072 | Dick Smith Nissan  | Non-Networked | 3/7/2022   |
| 40522 | 2       | 1                     | 2 Exchange St        | Greenville    | 29605 | South Carolina Technology and Aviation Center                | Non-Networked | 1/14/2021  |
| 40570 | 2       | 2                     | 301 University Ridge | Greenville    | 29601 | County of Greenville - County Square                         | Non-Networked | 11/4/2021  |
| 40571 | 2       | 1                     | 3300 Poinsett Hwy    | Greenville    | 29613 | Furman University - Admissions Building                      | Non-Networked | 1/10/2022  |
| 40940 | 2       | 1                     | 120 Saxe Gotha Rd    | West Columbia | 29172 | SHEALY-COLUMBIA COUNTER SALES                                | ChargePoint   | 6/29/2022  |
| 41264 | 2       | 2                     | 1980 GSP Dr          | Greer         | 29651 | Greenville-Spartanburg International Airport - Parking Lot B | Non-Networked | 6/14/2022  |
| 43458 | 2       | 2                     | 1400 Sumter St       | Columbia      | 29201 | City of Columbia - Sumter Street Garage                      | Non-Networked | 10/12/2021 |
| 43459 | 2       | 2                     | 1100 Lady St         | Columbia      | 29201 | City of Columbia - Lady Street Garage                        | Non-Networked | 10/12/2021 |

|       |   |   |                    |              |       |   |               |            |
|-------|---|---|--------------------|--------------|-------|---|---------------|------------|
| 45770 | 2 | 4 | 32 Alexander St    | Charleston   | 29401 | City of Charleston - Gaillard Auditorium            | Non-Networked | 9/3/2020   |
| 45771 | 2 | 2 | 93 Queen St        | Charleston   | 29401 | City of Charleston - Queen Street Garage            | Non-Networked | 9/3/2020   |
| 45772 | 2 | 2 | 63 Mary St         | Charleston   | 29403 | City of Charleston - Visitor Center Garage          | Non-Networked | 9/3/2020   |
| 45773 | 2 | 2 | 150 Township Cir   | Conway       | 29526 | Coastal Carolina University                         | Non-Networked | 7/14/2021  |
| 45774 | 2 | 2 | 801 Main St        | Conway       | 29526 | Horry County Library                                | Non-Networked | 1/10/2022  |
| 45777 | 2 | 1 | 3500 Pampas Dr     | Myrtle Beach | 29577 | Horry Georgetown Technical College - Speir Building | Non-Networked | 6/14/2022  |
| 45779 | 2 | 2 | 998 Riverwalk Pkwy | Rock Hill    | 29730 | City of Rock Hill - YMCA                            | Non-Networked | 1/10/2022  |
| 45780 | 2 | 2 | 155 Johnson St     | Rock Hill    | 29730 | City of Rock Hill - City Hall                       | Non-Networked | 1/10/2022  |
| 45782 | 2 | 2 | 160 E Kennedy      | Spartanburg  | 29306 | City of Spartanburg - Municipal Parking Garage      | Non-Networked | 10/12/2021 |
| 45784 | 2 | 2 | 111 Magnolia St    | Spartanburg  | 29306 | City of Spartanburg - Municipal Parking Garage      | Non-Networked | 10/12/2021 |
| 45786 | 2 | 2 | 299 N Church St    | Spartanburg  | 29306 | Spartanburg Marriott                                | Non-Networked | 1/10/2022  |
| 45790 | 2 | 2 | 310 E Academy St   | Union        | 29379 | University of South Carolina - Union                | Non-Networked | 1/14/2021  |
| 45791 | 2 | 1 | 400 Laurel St      | Conway       | 29526 | City of Conway - Public Parking Lot                 | Non-Networked | 12/9/2021  |
| 45796 | 2 | 1 | 550 Airport Rd     | Rock Hill    | 29732 | City of Rock Hill - York County Airport             | Non-Networked | 1/10/2022  |

|       |         |                       |                           |                  |       |                             |               |          |
|-------|---------|-----------------------|---------------------------|------------------|-------|-----------------------------|---------------|----------|
| 46456 | 2       | 3                     | 9940 Two Notch Rd         | Columbia         | 29223 | Dick Smith Nissan           | Non-Networked | 6/9/2020 |
| 47066 | 2       | 1                     | 3510 Clemson Blvd         | Anderson         | 29621 | Grainger Nissan - Anderson  | Non-Networked | 6/9/2020 |
| 47068 | 2       | 1                     | 5590 Jefferson Davis Hwy  | Beech Island     | 29842 | Bob Richards Nissan         | Non-Networked | 6/9/2020 |
| 47070 | 2       | 1                     | 1714 Savannah Hwy         | Charleston       | 29407 | Hudson Nissan               | Non-Networked | 6/9/2020 |
| 47073 | 2       | 1                     | 4676 Calhoun Memorial Hwy | Easley           | 29640 | Benson Nissan               | Non-Networked | 6/9/2020 |
| 47075 | 2       | 1                     | 311 N Cashua Dr           | Florence         | 29501 | Five Star Nissan - Florence | Non-Networked | 6/9/2020 |
| 47077 | 2       | 1                     | 2712 Laurens Rd           | Greenville       | 29607 | Crown Nissan - Greenville   | Non-Networked | 6/9/2020 |
| 47079 | 2       | 1                     | 1724 Montague Ave Ext     | Greenwood        | 29646 | Quality Nissan - Greenwood  | Non-Networked | 6/9/2020 |
| 47081 | 2       | 1                     | 14125 E Wade Hampton Blvd | Greer            | 29651 | Nissan of Greer             | Non-Networked | 6/9/2020 |
| 47086 | 2, DCFC | Level 2 - 1, DCFC - 1 | 4701 Highway 501          | Myrtle Beach     | 29579 | Grand Strand Nissan         | Non-Networked | 3/7/2022 |
| 47088 | 2       | 1                     | 7331 Rivers Ave           | North Charleston | 29406 | Hudson Nissan               | Non-Networked | 6/9/2020 |
| 47090 | 2       | 1                     | 2827 Saint Matthews Rd NE | Orangeburg       | 29118 | Orangeburg Nissan           | Non-Networked | 6/9/2020 |



|       |   |   |                    |                |       |   |               |           |
|-------|---|---|--------------------|----------------|-------|---|---------------|-----------|
| 47092 | 2 | 1 | 8519 Ocean Hwy     | Pawleys Island | 29585 | Coastal Nissan                                      | Non-Networked | 6/9/2020  |
| 47094 | 2 | 1 | 550 Galleria Blvd  | Rock Hill      | 29730 | Rock Hill Nissan                                    | Non-Networked | 6/9/2020  |
| 47096 | 2 | 1 | 1100 N Pine St     | Spartanburg    | 29303 | Benson Nissan                                       | Non-Networked | 6/9/2020  |
| 47098 | 2 | 1 | 1260 Broad St      | Sumter         | 29150 | Nissan of Sumter                                    | Non-Networked | 6/9/2020  |
| 47233 | 2 | 1 | 2790 Wagener Rd    | Aiken          | 29801 | Aiken Electric Co-op                                | Non-Networked | 6/14/2022 |
| 48585 | 2 | 2 | 2328 Sandifer Blvd | Westminster    | 29693 | Blue Ridge Electric Co-op                           | Non-Networked | 1/10/2022 |
| 48587 | 2 | 1 | 1025 Henderson St  | Columbia       | 29201 | University of South Carolina - Senate Street Garage | Non-Networked | 1/14/2021 |
| 48630 | 2 | 1 | 676 Highway 9E     | Bennettsville  | 29512 | Marlboro Electric Co-op                             | Non-Networked | 1/14/2021 |
| 48631 | 2 | 1 | 808 Knox Abbott Dr | Cayce          | 29033 | South Carolina Electric Co-op                       | Non-Networked | 9/3/2020  |
| 48634 | 2 | 1 | 611 Bull St        | Columbia       | 29201 | University of South Carolina - Bull Street Garage   | Non-Networked | 1/14/2021 |
| 48635 | 2 | 1 | 821 Park St        | Columbia       | 29201 | Innovista Discovery Garage                          | Non-Networked | 6/14/2022 |
| 48636 | 2 | 1 | 519 Main St        | Columbia       | 29201 | University of South Carolina - Horizon Garage       | Non-Networked | 6/14/2022 |
| 48638 | 2 | 1 | 501 Sumter St      | Columbia       | 29201 | University of South Carolina - Sumter Street Garage | Non-Networked | 1/14/2021 |
| 48640 | 2 | 1 | 6001 S Kings Hwy   | Myrtle Beach   | 29575 | Ocean Lakes Family Campground                       | Non-Networked | 1/14/2021 |

|       |      |   |                             |             |       |  |               |            |
|-------|------|---|-----------------------------|-------------|-------|--|---------------|------------|
| 48641 | 2    | 1 | 1104 W<br>McGregor St       | Pageland    | 29728 | Lynches River Electric Co-op                 | Non-Networked | 1/10/2022  |
| 48643 | 2    | 2 | 500 Ammons<br>Rd            | Spartanburg | 29306 | Spartanburg Downtown Airport                 | Non-Networked | 6/7/2021   |
| 49714 | 2    | 2 | 2671<br>Hospitality<br>Blvd | Florence    | 29501 | Hilton Garden Inn - Florence                 | Non-Networked | 6/9/2020   |
| 49715 | 2    | 2 | 126 N 5th St                | Hartsville  | 29550 | City of Hartsville - 5th Street Parking Lot  | Non-Networked | 1/14/2021  |
| 61932 | 2    | 2 | 1081 Morrison<br>Dr         | Charleston  | 29403 | STATION 1 HALF MILE NORTH                    | ChargePoint   | 6/29/2022  |
| 62352 | 2    | 2 | 1230 Fording<br>Island Rd   | Bluffton    | 29910 | HILTON HEAD BMW STATION 01                   | ChargePoint   | 6/29/2022  |
| 62827 | 2    | 1 | 120 Creech Rd               | Blythewood  | 29016 | Holiday Inn Express & Suites -<br>Blythewood | Non-Networked | 10/12/2021 |
| 63182 | 2    | 1 | 120 Pisgah<br>Church Rd     | Columbia    | 29202 | Columbia Friends Meeting House               | Non-Networked | 1/14/2021  |
| 63637 | 2    | 2 | 5919 Two<br>Notch Rd        | Columbia    | 29223 | BMW OF COLUMBIA STATION 01                   | ChargePoint   | 6/29/2022  |
| 63885 | 2    | 3 | 1625 Savannah<br>Hwy        | Charleston  | 29407 | Palmetto Ford Lincoln                        | Non-Networked | 1/14/2021  |
| 65364 | DCFC | 1 | 1155 Hwy 101<br>S.          | Greer       | 29651 | BMW FAST CHARGER 01                          | ChargePoint   | 6/29/2022  |
| 65365 | DCFC | 1 | 1400 Hwy 101<br>S           | Greer       | 29651 | BMW FAST CHARGER 02                          | ChargePoint   | 6/29/2022  |
| 65407 | 2    | 2 | 237 Park Ave<br>SW          | Aiken       | 29801 | Dumpster Depot                               | Non-Networked | 10/12/2021 |

|       |         |                       |                          |                  |       |   |               |           |
|-------|---------|-----------------------|--------------------------|------------------|-------|---|---------------|-----------|
| 66357 | 2       | 2                     | 515 Calhoun Drive        | Clemson          | 29634 | STATION E 04 LOT  | ChargePoint   | 6/29/2022 |
| 66764 | 2       | 2                     | 412 Cherry Road          | Clemson          | 29631 | STATION E 21 LOT  | ChargePoint   | 6/29/2022 |
| 67326 | 2       | 2                     | 1256 Fording Island Rd   | Bluffton         | 29910 | HILTON HEAD TANGER 1 EV 1   | ChargePoint   | 6/29/2022 |
| 67327 | 2       | 2                     | 1414 Fording Island Rd   | Bluffton         | 29910 | HILTON HEAD TANGER 2 EV 1   | ChargePoint   | 6/29/2022 |
| 67659 | 2       | 2                     | 4620 Factory Stores Blvd | Myrtle Beach     | 29579 | TANGERMHWY501 TANGER EV 2   | ChargePoint   | 6/29/2022 |
| 67663 | 2       | 2                     | 4840 Tanger Outlet Blvd  | North Charleston | 29418 | N CHARLESTON TANGER CHS EV 2                                      | ChargePoint   | 6/29/2022 |
| 67667 | 2       | 2                     | 10831 Kings Rd           | Myrtle Beach     | 29572 | KINGS RD TANGER EV 2  | ChargePoint   | 6/29/2022 |
| 68597 | 2       | 2                     | 300 River St             | Greenville       | 29601 | City of Greenville - Riverplace Garage                            | Non-Networked | 6/14/2022 |
| 68598 | 2       | 1                     | 414 River St             | Greenville       | 29601 | City of Greenville - River Street Garage                          | Non-Networked | 6/14/2022 |
| 69954 | 2       | 2                     | 400-462 N Jones Rd       | Greer            | 29651 | BMW STATION 08  | ChargePoint   | 6/29/2022 |
| 69955 | 2       | 2                     | N Jones Rd               | Greer            | 29651 | BMW STATION 07  | ChargePoint   | 6/29/2022 |
| 74090 | 2       | 2                     | 1255 Knox Abbott Dr      | Columbia         | 29033 | 212 Motors Columbia   | Non-Networked | 6/14/2022 |
| 76285 | 2       | 2                     | 720 McMillan Rd          | Clemson          | 29631 | STATION E 01 LOT  | ChargePoint   | 6/29/2022 |
| 78914 | 2, DCFC | Level 2 - 1, DCFC - 1 | 5 Research Dr            | Greenville       | 29607 | Clemson University - International Center for Automotive Research | Non-Networked | 6/7/2021  |

|       |   |   |                          |                    |       |  |               |           |
|-------|---|---|--------------------------|--------------------|-------|--|---------------|-----------|
| 79156 | 2 | 2 | 9698 Patriot Blvd        | Ladson             | 29456 | ABBERLYCROSSING BLDG 100 LEFT              | ChargePoint   | 6/29/2022 |
| 79987 | 2 | 2 | Delta Epsilon Ct         | Clemson            | 29631 | STATION E-15 LOT                           | ChargePoint   | 6/29/2022 |
| 80486 | 2 | 1 | 199 Tungsten Blvd        | Greer              | 29651 | BMW FACILITIES GREER SA 01                 | ChargePoint   | 6/29/2022 |
| 80853 | 2 | 2 | State Rd S-42-9927       | Greer              | 29651 | BMW SOC #1                                 | ChargePoint   | 6/29/2022 |
| 81423 | 2 | 2 | 240 Killian Commons Pkwy | Columbia           | 29203 | BMW OF COLUMBIA STATION 1                  | ChargePoint   | 6/29/2022 |
| 85454 | 2 | 2 | 34 Richardson St         | Greenville         | 29601 | City of Greenville - One City Place Garage | Non-Networked | 6/14/2022 |
| 85455 | 2 | 2 | 125 E Broad St           | Greenville         | 29601 | City of Greenville - Broad Street Garage   | Non-Networked | 6/14/2022 |
| 86282 | 2 | 2 | 299 YMCA Cir             | Seneca             | 29678 | STATION P 06 LOT                           | ChargePoint   | 6/29/2022 |
| 87940 | 2 | 2 | 763 Fashion Dr           | Columbia           | 29223 | R2I2 & RCPL R2I2 EV3                       | ChargePoint   | 6/29/2022 |
| 91852 | 2 | 1 | 111 Mathews Dr           | Hilton Head Island | 29926 | Palmetto Electric Co-op                    | Non-Networked | 6/14/2022 |
| 91853 | 2 | 1 | 15 Park Ln               | Hilton Head Island | 29928 | Popeye's                                   | Non-Networked | 7/13/2020 |
| 91859 | 2 | 1 | 9700 Kings Rd            | Myrtle Beach       | 29572 | Apache Family Campground                   | Non-Networked | 6/14/2022 |
| 91860 | 2 | 1 | 610 International Dr     | Myrtle Beach       | 29579 | Sandhills Bank                             | Non-Networked | 6/14/2022 |

|        |      |    |                           |                |       |   |               |            |
|--------|------|----|---------------------------|----------------|-------|---|---------------|------------|
| 92498  | 2    | 2  | Sawmill Creek Rd          | Bluffton       | 29910 | HILTON HEAD TANGER 1 EV 2                                 | ChargePoint   | 6/29/2022  |
| 96679  | 2    | 1  | 2383 Coastal Grand Circle | Myrtle Beach   | 29577 | Hilton Garden Inn Myrtle Beach                            | Blink Network | 6/28/2022  |
| 96880  | 2    | 2  | 1801 Indigo Market Dr     | Mount Pleasant | 29464 | INDIGO STATION IS STATION 3                               | ChargePoint   | 6/29/2022  |
| 96979  | 2    | 2  | 8007 N Kings Hwy          | Myrtle Beach   | 29572 | BRIX PIZZA STATION 1                                      | ChargePoint   | 6/29/2022  |
| 98556  | 2    | 6  | 3300 Poinsett Hwy         | Greenville     | 29613 | Furman University - South Chapel                          | Non-Networked | 1/10/2022  |
| 98777  | 2    | 2  | 80 Carolina Point Pkwy    | Greenville     | 29607 | RESIDENCEINNGVL EV CHARGER 02                             | ChargePoint   | 6/29/2022  |
| 99367  | 2    | 1  | 500 E Daniel Morgan Ave   | Spartanburg    | 29302 | VBHCS SHOP2   | ChargePoint   | 6/29/2022  |
| 99502  | 2    | 1  | 200 Fording Island Rd     | Bluffton       | 29910 | Vaden Nissan of Hilton Head                               | Non-Networked | 6/9/2020   |
| 102401 | DCFC | 8  | 8910 Farrow Road          | Columbia       | 29203 | Hilton Garden Inn Columbia Northeast - Tesla Supercharger | Tesla         | 10/11/2021 |
| 102402 | DCFC | 18 | 2701 David H McLeod Blvd  | Florence       | 29501 | Magnolia Mall - Tesla Supercharger                        | Tesla         | 10/11/2021 |
| 102403 | DCFC | 8  | 108 Carolina Point        | Greenville     | 29607 | Hilton Garden Inn Greenville - Tesla Supercharger         | Tesla         | 10/11/2021 |
| 102404 | DCFC | 10 | 2000 Coastal Grand Circle | Myrtle Beach   | 29577 | Coastal Grand Mall - Tesla Supercharger                   | Tesla         | 10/11/2021 |
| 102405 | DCFC | 8  | 114 Bradford Blvd         | Santee         | 29142 | Clark's Inn and Restaurant - Tesla Supercharger           | Tesla         | 10/11/2021 |

|        |   |   |                       |              |       |   |                   |           |
|--------|---|---|-----------------------|--------------|-------|---|-------------------|-----------|
| 103071 | 2 | 2 | 1125 Savannah hwy     | Charleston   | 29407 | WHOLE FOODS MKT CHARLESTON SC 1                                 | ChargePoint       | 6/29/2022 |
| 104664 | 2 | 2 | 604 67th Ave N        | Myrtle Beach | 29572 | SEAPATH ON 67TH EV STATION 02                                   | ChargePoint       | 6/29/2022 |
| 105275 | 2 | 1 | 4333 Sunset Blvd      | Lexington    | 29072 | HONDA OF COLA. STATION 2  | ChargePoint       | 6/29/2022 |
| 105439 | 2 | 1 | 686 Galleria Blvd     | Rock Hill    | 29730 | HCRH SHOP01   | ChargePoint       | 6/29/2022 |
| 105532 | 2 | 2 | 1221 Main Street      | Columbia     | 29201 | MAINANDGERVAIS1 STATION 1                                       | ChargePoint       | 6/29/2022 |
| 115514 | 2 | 2 | 151 E Church St       | Anderson     | 29624 | The Bleckley Inn - Tesla Destination                            | Tesla Destination | 11/3/2020 |
| 115515 | 2 | 2 | 1009 Craven St        | Beaufort     | 29902 | Rhett House Inn, a Select Registry Property - Tesla Destination | Tesla Destination | 11/3/2020 |
| 115516 | 2 | 1 | 142 Secession Dr      | Beaufort     | 29907 | Secession Golf Club - Tesla Destination                         | Tesla Destination | 11/3/2020 |
| 115517 | 2 | 2 | 1707 Lyttleton Street | Camden       | 29020 | Bloomsbury Inn, a Select Registry Property - Tesla Destination  | Tesla Destination | 11/3/2020 |
| 115519 | 2 | 2 | 205 Meeting St        | Charleston   | 29401 | Belmond Charleston Place - Tesla Destination                    | Tesla Destination | 11/3/2020 |
| 115520 | 2 | 2 | 301 Savannah Hwy      | Charleston   | 29407 | Holiday Inn Charleston-Riverview - Tesla Destination            | Tesla Destination | 11/3/2020 |
| 115521 | 2 | 3 | 55 Wentworth St       | Charleston   | 29456 | Grand Bohemian Charleston Hotel - Tesla Destination             | Tesla Destination | 11/3/2020 |
| 115522 | 2 | 2 | 68 Wentworth St       | Charleston   | 29401 | Renaissance Charleston Historic District - Tesla Destination    | Tesla Destination | 11/3/2020 |

|        |   |   |                    |                    |       |  |                   |           |
|--------|---|---|--------------------|--------------------|-------|--|-------------------|-----------|
| 115523 | 2 | 2 | 1310 Tiger Blvd    | Clemson            | 29631 | Best Western Plus University Inn & Conference Center - Tesla Destination | Tesla Destination | 11/3/2020 |
| 115524 | 2 | 4 | 217 Lanneau Ct     | Columbia           | 29212 | Aloft Columbia Harbison - Tesla Destination                              | Tesla Destination | 11/3/2020 |
| 115525 | 2 | 1 | 131 Falls St       | Greenville         | 29601 | Downtown Greenville - Tesla Destination                                  | Tesla Destination | 11/3/2020 |
| 115527 | 2 | 8 | 31 Market Point Dr | Greenville         | 29607 | Staybridge Suites Greenville I-85 Woodruff Road - Tesla Destination      | Tesla Destination | 11/3/2020 |
| 115528 | 2 | 1 | 47 Fisherman Ln    | Greenville         | 29615 | Wyndham Garden Greenville Airport - Tesla Destination                    | Tesla Destination | 11/3/2020 |
| 115529 | 2 | 3 | 670 Verdae Blvd    | Greenville         | 29607 | Embassy Suites by Hilton Greenville Golf Resort - Tesla Destination      | Tesla Destination | 11/3/2020 |
| 115530 | 2 | 3 | 119 E College Ave  | Hartsville         | 29550 | City of Hartsville East College Ave. Parking Lots - Tesla Destination    | Tesla Destination | 11/3/2020 |
| 115531 | 2 | 2 | 1 Harbourside Ln   | Hilton Head Island | 29928 | Shelter Cove Harbour - Tesla Destination                                 | Tesla Destination | 11/3/2020 |
| 115532 | 2 | 3 | 10 Surfwatch Wy    | Hilton Head Island | 29928 | Marriott's Surfwatch - Tesla Destination                                 | Tesla Destination | 11/3/2020 |
| 115533 | 2 | 2 | 11 Lemoyne Ave     | Hilton Head Island | 29928 | Best Western Ocean Breeze Inn - Tesla Destination                        | Tesla Destination | 11/3/2020 |
| 115534 | 2 | 2 | 130 Shipyard Dr    | Hilton Head Island | 29928 | Sonesta Resort Hilton Head Island - Tesla Destination                    | Tesla Destination | 11/3/2020 |
| 115535 | 2 | 1 | 2 Grasslawn Ave    | Hilton Head Island | 29928 | The Westin Hilton Head Island Resort & Spa - Tesla Destination           | Tesla Destination | 11/3/2020 |
| 115536 | 2 | 2 | 4 Lagoon Rd        | Hilton Head Island | 29928 | Bomboras Grille - Tesla Destination                                      | Tesla Destination | 11/3/2020 |

|        |   |   |                         |                    |       |  |                   |           |
|--------|---|---|-------------------------|--------------------|-------|--|-------------------|-----------|
| 115537 | 2 | 8 | 51 S Forest Beach Dr    | Hilton Head Island | 29928 | Marriott's Grande Ocean - Tesla Destination                        | Tesla Destination | 11/3/2020 |
| 115538 | 2 | 1 | 1 Sanctuary Beach Dr    | Kiawah Island      | 29455 | Sanctuary at Kiawah Island Golf Resort - Tesla Destination         | Tesla Destination | 11/3/2020 |
| 115539 | 2 | 2 | 307 Church St           | Latta              | 29565 | Abingdon Manor, Country Inn & Restaurant - Tesla Destination       | Tesla Destination | 11/3/2020 |
| 115540 | 2 | 2 | 101 W Main St           | Lexington          | 29072 | Alodia's Cucina Italiana - Tesla Destination                       | Tesla Destination | 11/3/2020 |
| 115541 | 2 | 4 | 1218 Belk Dr            | Mount Pleasant     | 29464 | Mount Pleasant Towne Centre - Tesla Destination                    | Tesla Destination | 11/3/2020 |
| 115542 | 2 | 2 | 1350 Stuart Engals Blvd | Mt. Pleasant       | 29464 | Towneplace Suites Charleston Mt. Pleasant - Tesla Destination      | Tesla Destination | 11/3/2020 |
| 115543 | 2 | 2 | 911 Riverwood Dr        | Murrells Inlet     | 29576 | Ellington at Wachesaw East - Tesla Destination                     | Tesla Destination | 11/3/2020 |
| 115544 | 2 | 2 | 10000 Beach Club Dr     | Myrtle Beach       | 29572 | Hilton Myrtle Beach Resort - Tesla Destination                     | Tesla Destination | 11/3/2020 |
| 115545 | 2 | 3 | 1804 S Ocean Blvd       | Myrtle Beach       | 29577 | Best Western Plus Grand Strand Inn & Suites - Tesla Destination    | Tesla Destination | 11/3/2020 |
| 115546 | 2 | 2 | 3000 N Ocean Blvd       | Myrtle Beach       | 29577 | The Caribbean Resort & Villas - Tesla Destination                  | Tesla Destination | 11/3/2020 |
| 115547 | 2 | 2 | 9800 Queensway Blvd     | Myrtle Beach       | 29572 | Embassy Suites Myrtle Beach Oceanfront Resort - Tesla Destination  | Tesla Destination | 11/3/2020 |
| 115548 | 2 | 2 | 7535 N Forest Dr        | North Charleston   | 29420 | SpringHill Suites by Marriott Charleston North - Tesla Destination | Tesla Destination | 11/3/2020 |



|        |   |   |                        |                    |       |  |                   |           |
|--------|---|---|------------------------|--------------------|-------|--|-------------------|-----------|
| 115549 | 2 | 4 | 100 North Beach Blvd   | North Myrtle Beach | 29582 | North Beach Plantation - Tesla Destination           | Tesla Destination | 11/3/2020 |
| 115550 | 2 | 2 | 719 North Beach Blvd   | North Myrtle Beach | 29582 | 21 Main at North Beach - Tesla Destination           | Tesla Destination | 11/3/2020 |
| 115551 | 2 | 3 | 14276 Ocean Hwy        | Pawleys Island     | 29585 | Litchfield Beach & Golf Resort - Tesla Destination   | Tesla Destination | 11/3/2020 |
| 115552 | 2 | 4 | 1285 Old Springdale Rd | Rock Hill          | 29730 | Home2 Suites by Hilton Rock Hill - Tesla Destination | Tesla Destination | 11/3/2020 |
| 115553 | 2 | 5 | 1300 River Run Ct      | Rock Hill          | 29732 | Courtyard by Marriott Rock Hill - Tesla Destination  | Tesla Destination | 11/3/2020 |
| 115554 | 2 | 5 | 575 Herrons Ferry Rd   | Rock Hill          | 29732 | The Pump House Restaurant - Tesla Destination        | Tesla Destination | 11/3/2020 |
| 115555 | 2 | 1 | 419 Hwy 38             | Sellers            | 29592 | Shuler's Bar-B-Que - Tesla Destination               | Tesla Destination | 11/3/2020 |
| 115556 | 2 | 3 | 225 Main St            | Spartanburg        | 29306 | AC Marriott Spartanburg - Tesla Destination          | Tesla Destination | 11/3/2020 |
| 115557 | 2 | 2 | 1245 Sniders Hwy       | Walterboro         | 29488 | Ramada Walterboro - Tesla Destination                | Tesla Destination | 11/3/2020 |
| 117158 | 2 | 1 | 115 Calhoun St         | Charleston         | 29401 | HOTELBELLAGRACE BELLA GRACE                          | ChargePoint       | 6/29/2022 |
| 117216 | 2 | 1 | 3340 Shipley Street    | Ladson             | 29456 | Palmetto Exchange Apartments                         | Blink             | 6/28/2022 |
| 119027 | 2 | 2 | 701 E Bay              | Charleston         | 29403 | CIGAR FACTORY EV STATION 01                          | ChargePoint       | 6/29/2022 |
| 121247 | 2 | 2 | 1805 Shoremeade Rd     | Mount Pleasant     | 29464 | INDIGO STATION IS STATION 1                          | ChargePoint       | 6/29/2022 |

|        |         |                       |                     |                    |       |  |                   |            |
|--------|---------|-----------------------|---------------------|--------------------|-------|--|-------------------|------------|
| 121296 | 2       | 2                     | 8106 calvin hall rd | Indian Land        | 29707 | COMPUCOM STATION 2   | ChargePoint       | 6/29/2022  |
| 121297 | 2       | 2                     | 8106 calvin hall rd | Indian Land        | 29707 | COMPUCOM STATION 3   | ChargePoint       | 6/29/2022  |
| 121653 | 2       | 2                     | 10 Westedge St      | Charleston         | 29403 | Publix #1599   | Non-Networked     | 4/6/2022   |
| 122542 | 2       | 2                     | 550 Columbiana Dr   | Columbia           | 29212 | Home2 Suites by Hilton Columbia Harbison - Tesla Destination | Tesla Destination | 11/3/2020  |
| 122543 | 2       | 2                     | 3450 W Radio Dr     | Florence           | 29501 | Homewood Suites by Hilton Hotel Florence - Tesla Destination | Tesla Destination | 11/3/2020  |
| 122875 | 2       | 1                     | 18 Wilborn Rd       | Hilton Head Island | 29926 | IRC EV 1 ISLAND EV   | ChargePoint       | 6/29/2022  |
| 122985 | DCFC    | 4                     | 7250 Rivers Ave     | North Charleston   | 29406 | Target T1829 - N Charleston, SC                              | Electrify America | 6/29/2022  |
| 122995 | 2       | 1                     | 110 S 562           | Landrum            | 29356 | N. TRADE AVENUE LANDRUM                                      | ChargePoint       | 6/29/2022  |
| 124982 | 2       | 1                     | YMCA Cir            | Clemson            | 29678 | Clemson University - P-6                                     | Non-Networked     | 6/7/2021   |
| 131655 | 2, DCFC | Level 2 - 2, DCFC - 1 | 111 Newland Rd      | Columbia           | 29210 | Jim Hudson Chevrolet   | Non-Networked     | 9/3/2020   |
| 133662 | DCFC    | 4                     | 1211 Woodruff Road  | Greenville         | 29607 | Sam's Club 8278 - Greenville, SC                             | Electrify America | 6/29/2022  |
| 135488 | 2       | 2                     | 429 N Church St     | Spartanburg        | 29303 | Wofford College  | Non-Networked     | 10/12/2021 |
| 143450 | 2       | 2                     | 1630 Bells Hwy      | Walterboro         | 29488 | WALTERBORO SBUX STARBUCKS 1                                  | ChargePoint       | 6/29/2022  |
| 147098 | 2       | 1                     | 42 Shelter Cove Ln  | Hilton Head Island | 29928 | Starbucks  | Non-Networked     | 7/13/2020  |

|        |   |   |                        |                    |       |   |                   |           |
|--------|---|---|------------------------|--------------------|-------|---|-------------------|-----------|
| 147465 | 2 | 2 | 400 Otarre Parkway     | Cayce              | 29033 | DOMINION ENERGY CORPORATE CAMP1                 | ChargePoint       | 6/29/2022 |
| 147466 | 2 | 2 | 400 Otarre Parkway     | Cayce              | 29033 | DOMINION ENERGY CORPORATE CAMP3                 | ChargePoint       | 6/29/2022 |
| 148536 | 2 | 2 | 400 Rhett ST           | Greenville         | 29601 | 400 Rhett                                       | SemaCharge        | 6/29/2022 |
| 149479 | 2 | 1 | 219 Robert Smalls Pkwy | Beaufort           | 29906 | Grainger Nissan - Beaufort                      | Non-Networked     | 6/9/2020  |
| 150560 | 2 | 2 | 301 Simply Less Cir    | Greer              | 29651 | Barista Tiny - Tesla Destination                | Tesla Destination | 11/3/2020 |
| 150615 | 2 | 2 | 2007 S Ocean Blvd      | Myrtle Beach       | 29577 | Grand Atlantic Resort - Tesla Destination       | Tesla Destination | 11/3/2020 |
| 150735 | 2 | 2 | 10 Road of Vines       | Travelers Rest     | 29690 | Hotel Domestique - Tesla Destination            | Tesla Destination | 11/3/2020 |
| 150740 | 2 | 2 | 2140 W Lucas St        | Florence           | 29501 | Tru By Hilton Florence I-95 - Tesla Destination | Tesla Destination | 11/3/2020 |
| 152052 | 2 | 1 | 41 S Forest Beach Dr   | Hilton Head Island | 29928 | OCEAN OAK STATION 1                             | ChargePoint       | 6/29/2022 |
| 152238 | 2 | 2 | 311 Falls St           | Greenville         | 29601 | CAP DECK P1                                     | ChargePoint       | 6/29/2022 |
| 152344 | 2 | 2 | 106 Old Salem Rd       | Seneca             | 29678 | HAMPTON INN 1 SATION 2                          | ChargePoint       | 6/29/2022 |
| 152466 | 2 | 2 | 320 Falls St           | Greenville         | 29601 | CAP DECK P2                                     | ChargePoint       | 6/29/2022 |
| 154304 | 2 | 2 | 20 Cooperative Way     | Columbia           | 29210 | CEPCI DR EV 1                                   | ChargePoint       | 6/29/2022 |
| 155156 | 2 | 2 | Unnamed Road           | Greer              | 29651 | BMW BMW LOT C 6                                 | ChargePoint       | 6/29/2022 |

|        |      |   |                         |                |       |   |                   |            |
|--------|------|---|-------------------------|----------------|-------|---|-------------------|------------|
| 155171 | 2    | 2 | 1025 Woodruff Rd        | Greenville     | 29607 | Bad Daddy's Burger Bar - Magnolia Park      | Blink             | 6/28/2022  |
| 155683 | 2    | 2 | 200 Ports Authority Dr  | Mt. Pleasant   | 29464 | South Carolina Ports Authority              | Non-Networked     | 1/10/2022  |
| 156062 | 2    | 2 | 325 Rocky Slope Rd      | Greenville     | 29607 | THE SUMEREL                                 | ChargePoint       | 6/29/2022  |
| 158612 | 2    | 2 | 757 S Anderson Rd       | Rock Hill      | 29730 | City of Rock Hill - Operations Headquarters | Non-Networked     | 12/9/2021  |
| 158625 | 2    | 2 | 1139 Main Rd            | Johns Island   | 29455 | JOHNS ISLAND BERKELEY ELEC.                 | ChargePoint       | 6/29/2022  |
| 162529 | 2    | 2 | 1800 Indigo Market Dr   | Mount Pleasant | 29464 | INDIGO STATION IS STATION 2                 | ChargePoint       | 6/29/2022  |
| 163528 | DCFC | 8 | 16319 Whyte Hardee Blvd | Hardeeville    | 29927 | Parker's - Tesla Supercharger               | Tesla             | 10/11/2021 |
| 166482 | DCFC | 1 | 9564 Two Notch Rd       | Columbia       | 29223 | Sesquicentennial State Park                 | Non-Networked     | 5/6/2021   |
| 166483 | 2    | 1 | 2401 State Park Rd      | Greenville     | 29609 | Paris Mountain State Park                   | Non-Networked     | 10/9/2020  |
| 166484 | 2    | 1 | 251 State Park Rd       | Santee         | 29142 | Santee State Park                           | Non-Networked     | 10/9/2020  |
| 166485 | 2    | 1 | 425 Meeting St          | West Columbia  | 29169 | West Columbia Interactive Art Park          | Non-Networked     | 6/14/2022  |
| 167167 | DCFC | 4 | 230 N Beltline Drive    | Florence       | 29501 | Walmart 630 Florence                        | Electrify America | 6/29/2022  |
| 167276 | 2    | 2 | 1871 Ashley River Rd    | Charleston     | 29407 | THE ASHLEY STATION 3                        | ChargePoint       | 6/29/2022  |

|        |      |   |                              |                    |       |  |                   |            |
|--------|------|---|------------------------------|--------------------|-------|--|-------------------|------------|
| 167277 | 2    | 2 | 1871 Ashley River            | Charleston         | 29407 | THE ASHLEY STATION 4   | ChargePoint       | 6/29/2022  |
| 167650 | 2    | 2 | 2328 Sandifer Blvd           | Westminster        | 29693 | BREC OCONEE 1  | ChargePoint       | 6/29/2022  |
| 168042 | DCFC | 8 | 4855 Tanger Outlet Boulevard | North Charleston   | 29418 | Mellow Mushroom - Tesla Supercharger                             | Tesla             | 10/11/2021 |
| 168107 | 2    | 2 | 22 Harbourside Lane          | Hilton Head Island | 29928 | HILTON HEAD HILTON HEAD 1  | ChargePoint       | 6/29/2022  |
| 168282 | DCFC | 8 | 30 Office Park Road          | Hilton Head Island | 29928 | Harris Teeter - Tesla Supercharger                               | Tesla             | 10/11/2021 |
| 168569 | 2    | 2 | 101 W Main St                | Lexington          | 29072 | Alodias Cucina Italiana - Tesla Destination                      | Tesla Destination | 11/3/2020  |
| 168610 | 2    | 2 | 721 Okatie Hwy               | Okatie             | 29909 | Beaufort Jasper Hampton Comprehensive Health - Tesla Destination | Tesla Destination | 11/3/2020  |
| 168797 | 2    | 4 | 1980 Clements Ferry Rd       | Charleston         | 29492 | Gildan HQ - Tesla Destination                                    | Tesla Destination | 11/3/2020  |
| 168828 | 2    | 2 | 1320 Hampton Ave Ext         | Greenville         | 29601 | Hampton Station - Tesla Destination                              | Tesla Destination | 11/3/2020  |
| 168831 | 2    | 2 | 2 Vendue Range               | Charleston         | 29401 | HarbourView Inn - Tesla Destination                              | Tesla Destination | 11/3/2020  |
| 168950 | 2    | 8 | 51 S Forest Beach Dr         | Hilton Head Island | 29928 | Marriotts Grande Ocean - Tesla Destination                       | Tesla Destination | 11/3/2020  |
| 168951 | 2    | 3 | 10 Surfwatch Wy              | Hilton Head Island | 29928 | Marriotts Surfwatch - Tesla Destination                          | Tesla Destination | 11/3/2020  |

|        |      |   |                          |                  |       |  |                   |           |
|--------|------|---|--------------------------|------------------|-------|--|-------------------|-----------|
| 169102 | 2    | 1 | 419 Hwy 38               | Sellers          | 29592 | Shulers Bar-B-Que - Tesla Destination                      | Tesla Destination | 11/3/2020 |
| 169135 | 2    | 2 | 493 Galleria Blvd        | Rock Hill        | 29730 | Staybridge Suites Rock Hill - Tesla Destination            | Tesla Destination | 11/3/2020 |
| 169268 | 2    | 4 | 5757 Palm Boulevard      | Isle of Palms    | 29451 | Wild Dunes Resort, a Destination Hotel - Tesla Destination | Tesla Destination | 11/3/2020 |
| 169290 | 2    | 2 | International Blvd       | North Charleston | 29418 | CCAA STATION 5   | ChargePoint       | 6/29/2022 |
| 169353 | DCFC | 4 | 360 Harbison Blvd        | Columbia         | 29212 | Walmart 1164 - Columbia, SC                                | Electrify America | 6/29/2022 |
| 169461 | DCFC | 4 | 2110 Bells Highway       | Walterboro       | 29488 | Walmart 1358 - Walterboro, SC                              | Electrify America | 6/29/2022 |
| 169522 | 2    | 1 | 503 E. Stone Ave.        | Greenville       | 29601 | NorthPointe Apartment Homes                                | SemaCharge        | 6/29/2022 |
| 170185 | 2    | 6 | 50 Cheryl Lane           | Summerville      | 29486 | South City Summerville Apartments                          | SemaCharge        | 6/29/2022 |
| 170186 | 2    | 2 | 2000 Daniel Island Drive | Charleston       | 29492 | Blackbaud  | SemaCharge        | 6/29/2022 |
| 170510 | 2    | 2 | 1175 Stonecrest Blvd     | Tega Cay         | 29708 | STONECREST STONECREST                                      | ChargePoint       | 6/29/2022 |
| 170697 | 2    | 2 | 2671 Hospitality Blvd    | Florence         | 29501 | Hilton Garden Inn - Florence, SC                           | EV Connect        | 1/14/2021 |
| 171204 | 2    | 4 | 1041 Portside Dr         | Myrtle Beach     | 29572 | Portside at Grande Dunes                                   | Blink             | 6/28/2022 |
| 171362 | 2    | 1 | 4615 Forest Dr           | Columbia         | 29206 | The Cardinal Apartments                                    | Blink             | 6/28/2022 |

|        |   |   |                          |                  |       |                              |             |           |
|--------|---|---|--------------------------|------------------|-------|------------------------------|-------------|-----------|
| 171522 | 2 | 2 | 1518 Savannah Hwy        | Charleston       | 29407 | HENDRICK BMW STATION 01      | ChargePoint | 6/29/2022 |
| 171652 | 2 | 2 | 1 Whitlee Ct             | Greenville       | 29607 | PROTERRA J1772_GVL_AC2       | ChargePoint | 6/29/2022 |
| 171913 | 2 | 2 | 1155 Hwy 101 S           | Greer            | 29651 | BMW STATION 03               | ChargePoint | 6/29/2022 |
| 171914 | 2 | 2 | 1155 Hwy 101 S           | Greer            | 29651 | BMW STATION 02               | ChargePoint | 6/29/2022 |
| 171923 | 2 | 2 | 1400 Hwy 101 S           | Greer            | 29651 | BMW STATION 01               | ChargePoint | 6/29/2022 |
| 171924 | 2 | 2 | 1400 Hwy 101 S           | Greer            | 29651 | BMW STATION 04               | ChargePoint | 6/29/2022 |
| 171925 | 2 | 2 | 1400 Hwy 101 S           | Greer            | 29651 | BMW STATION 05               | ChargePoint | 6/29/2022 |
| 171926 | 2 | 2 | 1400 Hwy 101 S           | Greer            | 29651 | BMW STATION 06               | ChargePoint | 6/29/2022 |
| 171941 | 2 | 2 | 1414 Fording Island Rd   | Bluffton         | 29910 | HILTON HEAD TANGER 2 EV 2    | ChargePoint | 6/29/2022 |
| 171942 | 2 | 2 | 4620 Factory Stores Blvd | Myrtle Beach     | 29579 | TANGERMHWY501 TANGER EV 1    | ChargePoint | 6/29/2022 |
| 171943 | 2 | 2 | 10831 Kings Rd           | Myrtle Beach     | 29572 | KINGS RD TANGER EV 1         | ChargePoint | 6/29/2022 |
| 172317 | 2 | 2 | 763 Fashion Dr           | Columbia         | 29223 | R212 & RCPL R212 EV1         | ChargePoint | 6/29/2022 |
| 172318 | 2 | 2 | 763 Fashion Dr           | Columbia         | 29223 | R212 & RCPL R212 EV2         | ChargePoint | 6/29/2022 |
| 172428 | 2 | 2 | 4840 Tanger Outlet Blvd  | North Charleston | 29418 | N CHARLESTON TANGER CHS EV 1 | ChargePoint | 6/29/2022 |

|        |      |   |                         |                  |       |                                 |             |           |
|--------|------|---|-------------------------|------------------|-------|---------------------------------|-------------|-----------|
| 172429 | 2    | 2 | 4840 Tanger Outlet Blvd | North Charleston | 29418 | N CHARLESTON TANGER CHS EV 4    | ChargePoint | 6/29/2022 |
| 172430 | 2    | 2 | 4840 Tanger Outlet Blvd | North Charleston | 29418 | N CHARLESTON TANGER CHS EV 3    | ChargePoint | 6/29/2022 |
| 172706 | 2    | 2 | State Rd S-42-9927      | Greer            | 29651 | BMW SOC #4                      | ChargePoint | 6/29/2022 |
| 172707 | 2    | 2 | State Rd S-42-9927      | Greer            | 29651 | BMW SOC #5                      | ChargePoint | 6/29/2022 |
| 172708 | 2    | 2 | State Rd S-42-9927      | Greer            | 29651 | BMW SOC #3                      | ChargePoint | 6/29/2022 |
| 172709 | 2    | 2 | State Rd S-42-9927      | Greer            | 29651 | BMW SOC #2                      | ChargePoint | 6/29/2022 |
| 173223 | DCFC | 1 | 145 Drivers Way         | Hardeeville      | 29927 | JLR HILTONHEAD DC FAST 01       | ChargePoint | 6/29/2022 |
| 173247 | 2    | 2 | 80 Carolina Point Pkwy  | Greenville       | 29607 | RESIDENCEINNGVL EV CHARGER 01   | ChargePoint | 6/29/2022 |
| 173437 | 2    | 2 | 1125 Savannah hwy       | Charleston       | 29407 | WHOLE FOODS MKT CHARLESTON SC 2 | ChargePoint | 6/29/2022 |
| 173540 | 2    | 2 | 604 67th Ave N          | Myrtle Beach     | 29572 | SEAPATH ON 67TH EV STATION 01   | ChargePoint | 6/29/2022 |
| 173652 | 2    | 1 | 686 Galleria Blvd       | Rock Hill        | 29730 | HCRH SHOP02                     | ChargePoint | 6/29/2022 |
| 173948 | 2    | 2 | 8106 calvin hall rd     | Indian Land      | 29707 | COMPUCOM STATION 1              | ChargePoint | 6/29/2022 |
| 174275 | 2    | 2 | 1630 Bells Hwy          | Walterboro       | 29488 | WALTERBORO SBUX STARBUCKS 2     | ChargePoint | 6/29/2022 |



|        |   |   |                      |                  |       |                                    |             |           |
|--------|---|---|----------------------|------------------|-------|------------------------------------|-------------|-----------|
| 174640 | 2 | 2 | 400 Otarre Parkway   | Cayce            | 29033 | DOMINION ENERGY CORPORATE CAMP2    | ChargePoint | 6/29/2022 |
| 174940 | 2 | 2 | 106 Old Salem Rd     | Seneca           | 29678 | HAMPTON INN 1 STATION 1            | ChargePoint | 6/29/2022 |
| 175484 | 2 | 2 | Unnamed Road         | Greer            | 29651 | BMW LOT C7                         | ChargePoint | 6/29/2022 |
| 175485 | 2 | 2 | Unnamed Road         | Greer            | 29651 | BMW LOT C5                         | ChargePoint | 6/29/2022 |
| 181484 | 2 | 2 | 1871 Ashley River Rd | Charleston       | 29407 | THE ASHLEY STATION 2               | ChargePoint | 6/29/2022 |
| 181485 | 2 | 2 | 1871 Ashley River Rd | Charleston       | 29407 | THE ASHLEY STATION 1               | ChargePoint | 6/29/2022 |
| 181486 | 2 | 2 | 1871 Ashley River Rd | Charleston       | 29407 | THE ASHLEY STATION 5               | ChargePoint | 6/29/2022 |
| 181729 | 2 | 2 | International Blvd   | North Charleston | 29418 | CCAA STATION 4                     | ChargePoint | 6/29/2022 |
| 181730 | 2 | 2 | International Blvd   | North Charleston | 29418 | CCAA STATION 3                     | ChargePoint | 6/29/2022 |
| 181731 | 2 | 2 | International Blvd   | North Charleston | 29418 | CCAA STATION 2                     | ChargePoint | 6/29/2022 |
| 181732 | 2 | 2 | International Blvd   | North Charleston | 29418 | CCAA STATION 1                     | ChargePoint | 6/29/2022 |
| 183931 | 2 | 2 | 4922 O'hear Ave      | North Charleston | 29405 | Lee & Associates of Charleston     | EV Connect  | 2/15/2021 |
| 183933 | 2 | 2 | 2513 Cattle Farm Rd  | Latta            | 29565 | Holiday Inn Express & Suites Latta | EV Connect  | 2/15/2021 |

|        |         |                       |                           |              |       |   |               |           |
|--------|---------|-----------------------|---------------------------|--------------|-------|---|---------------|-----------|
| 185147 | 2       | 2                     | 3117 Bramble Glen Dr      | Myrtle Beach | 29579 | GRANDVIEW APTS. EV STATION 2                | ChargePoint   | 6/29/2022 |
| 185148 | 2       | 2                     | 3117 Bramble Glen Dr      | Myrtle Beach | 29579 | GRANDVIEW APTS. EV STATION 1                | ChargePoint   | 6/29/2022 |
| 185162 | 2       | 1                     | 302 Seaboard Street       | Myrtle Beach | 29577 | Homewood Suites Myrtle Beach                | Blink         | 6/28/2022 |
| 185165 | 2       | 1                     | 149 Rogers Bridge Rd      | Duncan       | 29334 | Fairfield Inn Spartanburg Greenville/Duncan | Blink         | 6/28/2022 |
| 186059 | 2       | 3                     | 3014 Reva Ridge Drive     | Johns Island | 29455 | Crown at Live Oak Square Apartments         | Blink         | 6/28/2022 |
| 187824 | 2       | 2                     | 52 Market Point Dr        | Greenville   | 29607 | OVERTURE GREENV STATION 1                   | ChargePoint   | 6/29/2022 |
| 187825 | 2       | 1                     | 52 Market Point Dr        | Greenville   | 29607 | OVERTURE GREENV STATION 2                   | ChargePoint   | 6/29/2022 |
| 188179 | 2       | 2                     | 734 W Main St             | Pickens      | 29671 | BREC PICKENS OFFICE                         | ChargePoint   | 6/29/2022 |
| 189148 | 2       | 2                     | 2446 Laurens Rd           | Greenville   | 29607 | CARLTON SALES MERCEDES-BENZ                 | ChargePoint   | 6/29/2022 |
| 190282 | 2, DCFC | Level 2 - 2, DCFC - 2 | 490 Killian Rd            | Columbia     | 29203 | McDaniels Auto Group                        | Non-Networked | 6/7/2021  |
| 190765 | 2       | 4                     | 18 Chechessee Creek Drive | Okatie       | 29909 | Chechessee Creek Club                       | SemaCharge    | 6/29/2022 |
| 190882 | 2       | 2                     | 5721 Lancaster Hwy        | Fort Lawn    | 29714 | Landsford Inn                               | Non-Networked | 7/14/2021 |
| 191032 | 2       | 2                     | 930 Richland Street       | Columbia     | 29201 | 930RICHLANDST STATION 1                     | ChargePoint   | 6/29/2022 |

|        |      |    |                                |                    |       |   |               |            |
|--------|------|----|--------------------------------|--------------------|-------|---|---------------|------------|
| 194062 | DCFC | 12 | 272 Herring Road               | Fair Play          | 29643 | Carolina Travel Center - Tesla Supercharger | Tesla         | 10/11/2021 |
| 194591 | DCFC | 8  | 810 US-17                      | Yemassee           | 29945 | Wendy's - Tesla Supercharger                | Tesla         | 10/11/2021 |
| 194691 | 2    | 2  | 5335 Richburg Rd               | Richburg           | 29729 | IBHS #1 STATION 1                           | ChargePoint   | 6/29/2022  |
| 195355 | 2    | 7  | 6 Hoke Smith Boulevard         | Greenville         | 29615 | ROLLING GREEN VILLAGE location              | SemaCharge    | 6/29/2022  |
| 195779 | DCFC | 12 | 5982 West Jim Bilton Boulevard | Saint George       | 29477 | Food Lion - Tesla Supercharger              | Tesla         | 10/11/2021 |
| 195940 | 2    | 4  | 25 Draper Street               | Greenville         | 29611 | West Village Lofts                          | SemaCharge    | 6/29/2022  |
| 196258 | DCFC | 8  | 1123 South Lake Drive          | Lexington          | 29073 | Lexington, SC - Tesla Supercharger          | Tesla         | 10/11/2021 |
| 197045 | 2    | 2  | 8240 Windsor Hill Blvd         | North Charleston   | 29420 | Exchange at Windsor Hill                    | Blink         | 6/28/2022  |
| 197524 | 2    | 2  | 6809 State Park Rd             | Travelers Rest     | 29690 | Poinsett Highway Municipal Parking          | Non-Networked | 11/4/2021  |
| 197525 | 2    | 3  | 50 W Broad St                  | Greenville         | 29601 | Courtyard Greenville Downtown               | Non-Networked | 11/4/2021  |
| 197526 | 2    | 2  | 160 Fairview St                | Fountain Inn       | 29644 | Commerce Park                               | Non-Networked | 11/4/2021  |
| 197529 | 2    | 1  | 41 S Forest Beach Dr           | Hilton Head Island | 29928 | Ocean Oak Resort By Hilton Grand Vacations  | Non-Networked | 11/4/2021  |
| 198286 | DCFC | 1  | 1417 E Washington St           | Greenville         | 29607 | Spinx                                       | eVgo          | 6/29/2022  |
| 198287 | DCFC | 1  | 8001 Broad River Rd            | Irmo               | 29063 | Spinx                                       | eVgo          | 6/29/2022  |

|        |      |   |                          |                 |       |  |             |           |
|--------|------|---|--------------------------|-----------------|-------|--|-------------|-----------|
| 198288 | DCFC | 1 | 7495 Augusta Rd          | Piedmont        | 29673 | Spinx                                  | eVgo        | 6/29/2022 |
| 198289 | DCFC | 1 | 9636 Highway 78          | Ladson          | 29456 | Spinx                                  | eVgo        | 6/29/2022 |
| 198290 | DCFC | 1 | 1504 Boiling Springs Rd  | Boiling Springs | 29316 | Spinx                                  | eVgo        | 6/29/2022 |
| 198291 | DCFC | 1 | 697 Fairview Rd          | Simpsonville    | 29680 | Spinx                                  | eVgo        | 6/29/2022 |
| 198292 | DCFC | 1 | 901 Marue Dr             | Greenville      | 29605 | Spinx                                  | eVgo        | 6/29/2022 |
| 198334 | DCFC | 1 | 2031 Sam Rittenberg Blvd | Charleston      | 29407 | AAA                                    | eVgo        | 6/29/2022 |
| 201316 | DCFC | 8 | 3615 St Matthews Rd      | Orangeburg      | 29118 | Hickory Point Gas - Tesla Supercharger | Tesla       | 6/14/2022 |
| 201792 | 2    | 6 | 295 Midland Parkway      | Summerville     | 29485 | Summerville Medical Center             | SemaCharge  | 6/29/2022 |
| 201796 | 2    | 2 | 1 Parkway S              | Greenville      | 29615 | HNA MAIN HNA MAIN                      | ChargePoint | 6/29/2022 |
| 202445 | 2    | 2 | 10 Moorlyn Dr            | Greer           | 29650 | Venditio LLC                           | Blink       | 6/28/2022 |
| 202936 | DCFC | 2 | 33465 US-301             | Hamer           | 29547 | Sunoco West                            | Greenlots   | 1/10/2022 |
| 203259 | DCFC | 8 | 500 Buff Blvd            | Summerton       | 29148 | Dairy Queen - Tesla Supercharger       | Tesla       | 1/10/2022 |
| 204267 | 2    | 2 | 2840 Saint Matthews Road | Orangeburg      | 29118 | Gibbes Ford                            | Blink       | 6/28/2022 |
| 204598 | 2    | 2 | 200 Library St           | Spartanburg     | 29306 | COURTHOUSE PD STATION 1                | ChargePoint | 6/29/2022 |

|        |      |   |                       |             |       |   |               |           |
|--------|------|---|-----------------------|-------------|-------|---|---------------|-----------|
| 206480 | 2    | 1 | 314 S McDuffie St     | Anderson    | 29624 | MARKET ST GRG STATION 5                   | ChargePoint   | 6/29/2022 |
| 206494 | 2    | 1 | 314 S McDuffie St     | Anderson    | 29624 | MARKET ST GRG STATION 3                   | ChargePoint   | 6/29/2022 |
| 206495 | 2    | 1 | 314 S McDuffie St     | Anderson    | 29624 | MARKET ST GRG STATION 1                   | ChargePoint   | 6/29/2022 |
| 206498 | 2    | 1 | 314 S McDuffie St     | Anderson    | 29624 | MARKET ST GRG STATION 4                   | ChargePoint   | 6/29/2022 |
| 206518 | 2    | 1 | 314 S McDuffie St     | Anderson    | 29624 | MARKET ST GRG STATION 2                   | ChargePoint   | 6/29/2022 |
| 206603 | 2    | 1 | 1211 S Darryl Pl      | Sioux Falls | 57110 | GLO Best Western Dawley Farms Sioux Falls | Non-Networked | 3/7/2022  |
| 207750 | 2    | 2 | 13500 Clemson Blvd    | Seneca      | 29678 | LAKESIDE LODGE STATION 1                  | ChargePoint   | 6/29/2022 |
| 211905 | DCFC | 8 | 2401 River Rd         | Piedmont    | 29673 | VGO - Tesla Supercharger                  | Tesla         | 4/6/2022  |
| 212643 | 2    | 1 | 2645 Broad St         | Sumter      | 29150 | 2645 Broad St Sumter                      | Non-Networked | 4/6/2022  |
| 212644 | 2    | 2 | 114 Three Point Dr    | Ridgeville  | 29472 | Camp Hall Info Center                     | Non-Networked | 4/6/2022  |
| 212646 | 2    | 2 | 110 Friend St         | Newberry    | 29108 | Newberry County Library System            | Non-Networked | 4/6/2022  |
| 212647 | 2    | 2 | 2808 SC-72            | Abbeville   | 29620 | Lakelands Carts                           | Non-Networked | 4/6/2022  |
| 212648 | 2    | 1 | 114 Gregor Mendel Cir | Greenwood   | 29649 | Clemson University - Self Regional Hall   | Non-Networked | 4/6/2022  |
| 212649 | 2    | 2 | 103 S Harper St       | Laurens     | 29360 | S Harper St Parking Lot                   | Non-Networked | 4/6/2022  |

|        |      |   |                         |                    |       |                                     |               |          |
|--------|------|---|-------------------------|--------------------|-------|-------------------------------------|---------------|----------|
| 212650 | 2    | 1 | 100 Parkridge Dr        | Columbia           | 29212 | Love Chevrolet                      | Non-Networked | 4/6/2022 |
| 212651 | 2    | 2 | 750 Saturn Pkwy         | Columbia           | 29212 | Comfort Suites Columbia at Harbison | Non-Networked | 4/6/2022 |
| 212652 | 2    | 2 | 2210 Bush River Rd      | Columbia           | 29210 | Quality Inn & Suites                | Non-Networked | 4/6/2022 |
| 212653 | 2    | 1 | 177 Greystone Blvd      | Columbia           | 29210 | Classic Ford Lincoln of Columbia    | Non-Networked | 4/6/2022 |
| 212654 | 2    | 1 | 7201 Garners Ferry Rd   | Columbia           | 29209 | Dick Smith Ford                     | Non-Networked | 4/6/2022 |
| 212655 | 2    | 2 | 5617 Sunset Blvd        | Lexington          | 29072 | Herndon Chevrolet                   | Non-Networked | 4/6/2022 |
| 212656 | DCFC | 1 | 825 US-1                | Lugoff             | 29078 | Lugoff Chevrolet Buick GMC          | Non-Networked | 4/6/2022 |
| 212761 | 2    | 1 | 2662 Broad St           | Sumter             | 29150 | Sumter Chrysler Dodge Jeep & Ram    | Non-Networked | 4/6/2022 |
| 212762 | 2    | 1 | 80 Pope Ave             | Hilton Head Island | 29928 | Celebration Park                    | Non-Networked | 4/6/2022 |
| 212765 | 2    | 1 | 430 William Hilton Pkwy | Hilton Head Island | 29926 | Petsmart                            | Non-Networked | 4/6/2022 |
| 212766 | 2    | 2 | 20 Wilborn Rd           | Hilton Head Island | 29926 | Hilton Head Recreational Center     | Non-Networked | 4/6/2022 |
| 212768 | 2    | 1 | 2645 Broad St           | Sumter             | 29150 | Springhill Suites Station           | Non-Networked | 4/6/2022 |
| 212769 | 2    | 1 | 2541 Broad St           | Sumter             | 29150 | Candlewood Suites Station           | Non-Networked | 4/6/2022 |
| 212770 | 2    | 1 | 2490 Broad St           | Sumter             | 29150 | Holiday Inn Express Station         | Non-Networked | 4/6/2022 |
| 212771 | 2    | 1 | 3355 Patriot Pkwy       | Sumter             | 29154 | Willie Sue's Station                | Non-Networked | 4/6/2022 |

|        |      |    |                     |                    |       |  |               |           |
|--------|------|----|---------------------|--------------------|-------|--|---------------|-----------|
| 213785 | 2    | 1  | 51 Auto Mall Blvd   | Hardeeville        | 29927 | ANHYUNDAIHH1 STATION #1                    | ChargePoint   | 6/29/2022 |
| 213786 | 2    | 1  | 225 Drivers Way     | Hardeeville        | 29927 | ANHYUNDAIHH1 SHOP CHARGER                  | ChargePoint   | 6/29/2022 |
| 213991 | DCFC | 2  | 71 Mathews Dr       | Hilton Head Island | 29926 | Circle K #270277                           | Non-Networked | 5/5/2022  |
| 214067 | DCFC | 1  | 71 Mathews Dr       | Hilton Head        | 29926 | Circle K                                   | Non-Networked | 5/5/2022  |
| 214709 | DCFC | 12 | 2076 Bells Hwy      | Walterboro         | 29488 | Shoppes of Walterboro - Tesla Supercharger | Tesla         | 5/5/2022  |
| 214915 | 2    | 2  | 3955 Faber Pl Dr    | North Charleston   | 29405 | 3955 FABER PLAC STATION 1                  | ChargePoint   | 6/29/2022 |
| 214928 | 2    | 2  | 100 Bushwood Court  | Summerville        | 29486 | Building 100                               | SemaCharge    | 6/29/2022 |
| 214929 | 2    | 2  | 200 Bushwood Court  | Summerville        | 29486 | Building 200                               | SemaCharge    | 6/29/2022 |
| 214930 | 2    | 2  | 500 Raleigh Circle  | Summerville        | 29486 | Building 500                               | SemaCharge    | 6/29/2022 |
| 214931 | 2    | 2  | 300 Gozer Place     | Summerville        | 29486 | Building 300                               | SemaCharge    | 6/29/2022 |
| 214932 | 2    | 2  | 400 Gozer Place     | Summerville        | 29486 | Building 400                               | SemaCharge    | 6/29/2022 |
| 216566 | 2    | 4  | 65 Fairchild Street | Charleston         | 29492 | Blackbaud - 65 Fairchild St                | SemaCharge    | 6/29/2022 |
| 217422 | 2    | 1  | 1945 Hanahan Road   | North Charleston   | 29406 | The Burke                                  | Blink         | 6/28/2022 |

|        |      |    |                              |              |       |                                       |               |           |
|--------|------|----|------------------------------|--------------|-------|---------------------------------------|---------------|-----------|
| 218660 | DCFC | 16 | 3390 N Williston Rd          | Florence     | 29506 | Buc-ee's - Tesla Supercharger         | Tesla         | 6/14/2022 |
| 220197 | DCFC | 12 | 3725 Avenue of the Carolinas | Fort Mill    | 29708 | Comfort Inn - Tesla Supercharger      | Tesla         | 6/14/2022 |
| 220289 | 2    | 1  | 2101 Florence Harllee Blvd   | Florence     | 29506 | Holiday Inn Express and Suites        | Non-Networked | 6/14/2022 |
| 220290 | DCFC | 2  | 2696 US-76                   | Mullins      | 29574 | Marion Construction Center            | Greenlots     | 6/14/2022 |
| 220291 | 2    | 3  | 2592 SC-9                    | Little River | 29566 | North Strand Nissan                   | Non-Networked | 6/14/2022 |
| 220292 | 2    | 1  | 3740 Hwy 9 E                 | Little River | 29566 | Jud Kuhn Chevrolet                    | Non-Networked | 6/14/2022 |
| 220295 | 2    | 2  | 9922 N Kings Hwy             | Myrtle Beach | 29572 | Chestnut Hill Restaurant              | Non-Networked | 6/14/2022 |
| 220296 | 2    | 2  | 100 Duvall Dr                | Greenville   | 29607 | Steve White Volkswagen                | Non-Networked | 6/14/2022 |
| 220297 | 2    | 2  | 200 Duvall Dr                | Greenville   | 29607 | Audi Greenville                       | Non-Networked | 6/14/2022 |
| 220298 | 2    | 1  | 166 Church St                | Charleston   | 29401 | French Quarter Inn                    | Non-Networked | 6/14/2022 |
| 220300 | 2    | 1  | 1500 Savannah Hwy            | Charleston   | 29407 | Rick Hendrick Chevy                   | Non-Networked | 6/14/2022 |
| 220301 | 2    | 1  | 1468 Savannah Hwy            | Charleston   | 29407 | Rick Hendrick Dodge Jeep Ram Chrysler | Non-Networked | 6/14/2022 |
| 220302 | 2    | 1  | 1464 Savannah Hwy            | Charleston   | 29407 | Hendrick Volvo Cars of Charleston     | Non-Networked | 6/14/2022 |
| 220444 | 2    | 2  | 1475 Gunnison Cir            | Sumter       | 29150 | RTRT AT SUMTER BHC SUMTER 3           | ChargePoint   | 6/29/2022 |



|        |      |   |                         |                    |       |                              |             |           |
|--------|------|---|-------------------------|--------------------|-------|------------------------------|-------------|-----------|
| 220445 | 2    | 2 | 3310 Sheminally Way     | Sumter             | 29150 | RTRT AT SUMTER BHC SUMTER 2  | ChargePoint | 6/29/2022 |
| 220446 | 2    | 2 | 1405 Gunnison Cir       | Sumter             | 29150 | RTRT AT SUMTER BHC SUMTER 1  | ChargePoint | 6/29/2022 |
| 220682 | DCFC | 8 | 436 William Hilton Pkwy | Hilton Head Island | 29926 | Parkers - Tesla Supercharger | Tesla       | 6/14/2022 |

## **Appendix B**

### **Tabular Data for DCFC Locations on South Carolina AFC Corridors**

**DCFC Locations on South Carolina AFC Corridors**

| <b>ID</b> | <b>Charger Level</b> | <b>Number of Connectors</b> | <b>Street Address</b> | <b>City</b>      | <b>Zip Code</b> | <b>Location</b>                  | <b>EV Network</b> | <b>Date Last Confirmed</b> |
|-----------|----------------------|-----------------------------|-----------------------|------------------|-----------------|----------------------------------|-------------------|----------------------------|
| 122985    | DCFC                 | 4                           | 7250 Rivers Ave       | North Charleston | 29406           | Target T1829 - N Charleston, SC  | Electrify America | 6/29/2022                  |
| 133662    | DCFC                 | 4                           | 1211 Woodruff Road    | Greenville       | 29607           | Sam's Club 8278 - Greenville, SC | Electrify America | 6/29/2022                  |
| 167167    | DCFC                 | 4                           | 230 N Beltline Drive  | Florence         | 29501           | Walmart 630 Florence             | Electrify America | 6/29/2022                  |
| 169353    | DCFC                 | 4                           | 360 Harbison Blvd     | Columbia         | 29212           | Walmart 1164 - Columbia, SC      | Electrify America | 6/29/2022                  |
| 169461    | DCFC                 | 4                           | 2110 Bells Highway    | Walterboro       | 29488           | Walmart 1358 - Walterboro, SC    | Electrify America | 6/29/2022                  |